

MSD MULTI-ARRAY[®] Assay System

Phospho-c-Jun (Ser63) Whole Cell Lysate Kit

1-Plate Kit	K151CGD-1
5-Plate Kit	K151CGD-2
20-Plate Kit	K151CGD-3



MSD[®] Phosphoprotein Assays

Phospho-c-Jun (Ser63) Whole Cell Lysate Kit

This package insert must be read in its entirety before using this product.

FOR RESEARCH USE ONLY.

NOT FOR USE IN DIAGNOSTIC PROCEDURES.

MESO SCALE DISCOVERY[®]

A division of Meso Scale Diagnostics, LLC.

9238 Gaither Road

Gaithersburg, MD 20877 USA

www.mesoscale.com

MESO SCALE DISCOVERY, MESO SCALE DIAGNOSTICS, WWW.MESOSCALE.COM, MSD, MSD (DESIGN), DISCOVERY WORKBENCH, QUICKPLEX, MULTI-ARRAY, MULTI-SPOT, SULFO-TAG, SECTOR, SECTOR HTS, SECTOR PR, 4-SPOT (DESIGN), and SPOT THE DIFFERENCE are trademarks and/or service marks of Meso Scale Diagnostics, LLC.

© 2012 Meso Scale Diagnostics, LLC. All rights reserved.

Table of Contents

Introduction	4
Principle of the Assay	4
Reagents Supplied	5
Required Material and Equipment (not supplied)	6
Optional Material (not supplied)	6
Safety	6
Reagent Preparation.....	6
Sample Preparation and Storage	8
Assay Protocol.....	9
Typical Data.....	11
Assay Components	12
References.....	12
Appendix: Suggested Cell Lysis Protocols.....	13
Summary Protocol.....	15
Plate Diagrams	17

Ordering Information

MSD Customer Service

Phone: 1-301-947-2085
Fax: 1-301-990-2776
Email: CustomerService@mesoscale.com

MSD Scientific Support

Phone: 1-301-947-2025
Fax: 1-240-632-2219 attn: Scientific Support
Email: ScientificSupport@mesoscale.com

Introduction

c-Jun is a proto-oncogene encoding for proteins that either homodimerize or heterodimerize with members of the c-Fos protein family to form the transcription factor Activator Protein-1 (AP-1). Activation of transcription through c-Jun is mediated by SAPK/JNK. In response to cellular exposure to growth factors, cytokines, cellular stress, or damaging agents, upstream phosphorylation events in the MAPK pathway result in the phosphorylation of SAPK/JNK. SAPK/JNK binds to c-Jun on its delta domain and phosphorylates it on serines 63 and 73, located in its transactivation domain. Both the delta and transactivation domains of c-Jun are located near the N-terminus, whereas the DNA-binding and dimerization domains are located near the C-terminus of the protein. The dimerization domain contains a leucine zipper motif that mediates the formation of homo- and heterodimers with Jun and Fos proteins to form AP-1. The AP-1 transcription factor complex binds to TPA response elements on DNA and regulates the expression of genes involved in cellular growth, signaling, differentiation, and apoptosis.

Principle of the Assay

MSD phosphoprotein assays provide a rapid and convenient method for measuring biomarkers within a single, small-volume sample. The c-Jun (Ser63) assay is a sandwich immunoassay (Figure 1). MSD provides a plate pre-coated with capture antibodies. The user adds the sample and a solution containing detection antibodies conjugated with electrochemiluminescent labels (MSD SULFO-TAG™) over the course of one or more incubation periods. Analytes in the sample bind to capture antibodies immobilized on the working electrode surface; recruitment of the detection antibodies by the bound analytes completes the sandwich. The user adds an MSD buffer that provides the appropriate chemical environment for electrochemiluminescence and loads the plate into a SECTOR® Imager where a voltage applied to the plate electrodes causes the captured labels to emit light. The instrument measures intensity of emitted light to provide a quantitative measure of analytes in the sample.

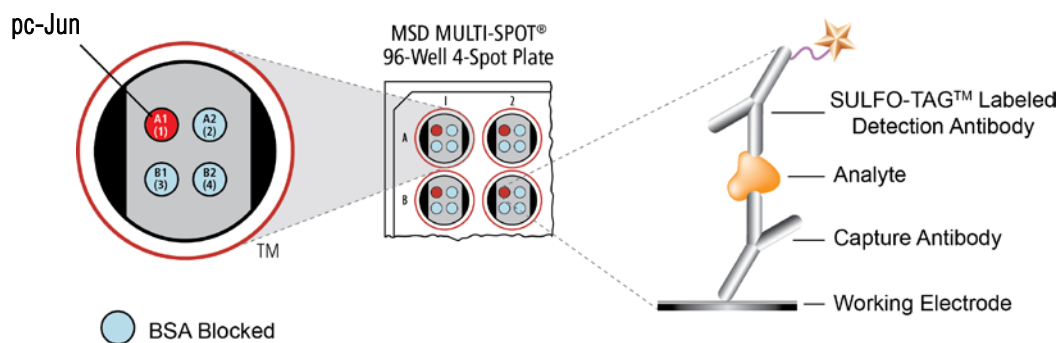


Figure 1. Spot diagram showing placement of analyte capture antibody. The numbering convention for the different spots is maintained in the software visualization tools, on the plate packaging, and in the data files. A unique bar code label on each plate allows complete traceability back to MSD manufacturing records.

Reagents Supplied

Product Description	Storage	Quantity per Kit		
		K151CGD-1	K151CGD-2	K151CGD-3
MULTI-SPOT 96-Well 4-Spot Phospho-c-Jun (Ser63) Plate(s) N451CGA-1	2–8°C	1 plate	5 plates	20 plates
SULFO-TAG Anti-Total c-Jun Antibody ¹ (50X)	2–8°C	1 vial (75 µL)	1 vial (375 µL)	4 vials (375 µL ea)
Tris Lysis Buffer (1X) R60TX-3 (50 mL), R60TX-2 (200 mL)	2–8°C	1 bottle (50 mL)	1 bottle (50 mL)	1 bottle (200 mL)
Tris Wash Buffer (10X) R61TX-2 (200 mL), R61TX-1 (1000 mL)	2–8°C	1 bottle (200 mL)	1 bottle (200 mL)	1 bottle (1000 mL)
Phosphatase Inhibitor I (100X)	2–8°C	1 vial (0.1 mL)	1 vial (0.5 mL)	1 vial (2.0 mL)
Phosphatase Inhibitor II (100X)	2–8°C	1 vial (0.1 mL)	1 vial (0.5 mL)	1 vial (2.0 mL)
Protease Inhibitor Solution (100X)	2–8°C	1 vial (0.1 mL)	1 vial (0.5 mL)	1 vial (2.0 mL)
Blocker D-M ² (2%)	≤-10°C	1 vial (0.2 mL)	1 vial (0.9 mL)	4 vials (0.9 mL ea)
Blocker D-R ² (10%)	≤-10°C	1 vial (0.05 mL)	1 vial (0.2 mL)	4 vials (0.2 mL ea)
Blocker A (dry powder) R93BA-4	RT	1 vial (15 g)	1 vial (15 g)	1 vial (15 g)
Blocker B (dry powder) R93BB-1	RT	1 vial (1 g)	1 vial (1 g)	1 vial (2 g)
Read Buffer T (4X) R92TC-3 (50 mL), R92TC-2 (200 mL)	RT	1 bottle (50 mL)	1 bottle (50 mL)	1 bottle (200 mL)

¹ SULFO-TAG conjugated detection antibodies should be stored in the dark.

² Blockers D-M and D-R can tolerate up to 5 freeze-thaw cycles. Alternatively, an aliquot of Blockers D-M and D-R can be stored at 2–8°C up to 1 month.

Required Materials and Equipment (not supplied)

- Deionized water for diluting concentrated buffers
- 500 mL bottle for reagent preparation
- 50 mL tubes for reagent preparation
- 15 mL tubes for reagent preparation
- Microcentrifuge tubes for preparing serial dilutions
- Appropriate liquid handling equipment for desired throughput, capable of dispensing 10 to 150 μ L into a 96-well microtiter plate
- Plate washing equipment: automated plate washer or multichannel pipette
- Adhesive plate seals
- Microtiter plate shaker

Optional Material (not supplied)

- Phospho-c-Jun (Ser63) Whole Cell Lysate Set (C11CG-1)

Safety

Use safe laboratory practices and wear gloves, safety glasses, and lab coats when handling kit components. Handle and dispose of all hazardous samples properly in accordance with local, state, and federal guidelines.

Reagent Preparation

Prepare Tris Wash Buffer

Dilute the 10X stock of Tris Wash Buffer provided with the MSD kit to 1X as shown below. Tris Wash Buffer (1X) will be used throughout the assay to make additional reagents and wash plates. Approximately 350 mL per plate is required—more if using an automatic plate washer.

For 1 plate, combine:

- 35 mL of Tris Wash Buffer (10X)
- 315 mL deionized water

Excess Tris Wash Buffer may be stored at room temperature in a tightly sealed container.

Prepare Blocking Solution-A

For 1 plate, combine:

- 600 mg Blocker A (dry powder)
- 20 mL 1X Tris Wash Buffer

Prepare Antibody Dilution Buffer

For 1 plate, combine:

- 150 μ L 2% Blocker D-M
- 30 μ L 10% Blocker D-R
- 1 mL blocking solution-A
- 1.82 mL 1X Tris Wash Buffer

Set aside on ice.

Prepare Complete Lysis Buffer

Prepare complete lysis buffer just prior to use.

For 2–3 plates (1X concentration) of complete lysis buffer, combine:

- 100 μ L Protease Inhibitor Solution (100X stock)
- 100 μ L Phosphatase Inhibitor Solution I (100X stock)
- 100 μ L Phosphatase Inhibitor Solution II (100X stock)
- 9.7 mL of 1X Tris Lysis Buffer

Immediately place the complete lysis buffer on ice; it should be ice cold before use.

Prepare 5% Blocking Solution-B

For 1 plate, combine:

- 50 mg Blocker B (dry powder)
- 1 mL complete lysis buffer

Mix well. The 5% blocking solution-B should be ice cold before use.

Prepare Detection Antibody Solution

MSD provides detection antibody in a 50X stock solution. The working detection antibody solution is 1X.

For 1 plate, combine:

- 60 μ L 50X SULFO-TAG Anti-Total c-Jun Antibody
- 2.94 mL antibody dilution buffer

Prepare Read Buffer

MSD provides Read Buffer T as a 4X stock solution. The working solution is 1X.

For 1 plate, combine:

- 5 mL Read Buffer T (4X)
- 15 mL deionized water

You may prepare diluted read buffer in advance and store it at room temperature in a tightly sealed container.

Prepare MSD Plate

MSD plates are pre-coated with capture antibodies (Figure 1) and exposed to a proprietary stabilizing treatment to ensure the integrity and stability of the immobilized antibodies. Plates can be used as delivered; no additional preparation (e.g., pre-wetting) is required.

Sample Preparation and Storage

Most lysis buffers and sample matrices are compatible with MSD plates, although high concentrations of denaturing reagents should be avoided. Keep SDS and other ionic detergents to a concentration of 0.1% or less in the sample applied to the well and avoid reducing agents (DTT >1mM). Please contact MSD Scientific Support if you have any questions about lysate preparation options.

Analysis of proteins in their activated state (i.e. phosphorylated) usually requires stimulation prior to cell lysis. Verify cell stimulation and sample preparation prior to using this kit.

Perform all manipulations on ice; keep PBS wash buffer and complete lysis buffer ice cold. Cell concentrations for lysis can range from 0.5 to 5×10^7 cells per mL of lysis buffer. Protein yields will vary by cell line. To get your desired final protein concentration, you will need to optimize the number of cells used and the amount of complete lysis buffer added. Depending on the stability of the target in the matrix, you may need additional protease and phosphatase inhibitors in the matrix or diluent.

MSD provides suggested cell lysis protocols in the appendix; however, specific cell types or targets may benefit from alternative buffer components or techniques, depending upon the particular research application.

Assay Protocol

1. Block Plate and Prepare Samples:

- a. Add 150 μL of blocking solution-A to each well. Seal the plate with an adhesive plate seal, and incubate for 1 hour with vigorous shaking (300–1000 rpm) at room temperature.
- b. Prepare complete lysis buffer just prior to sample dilution.
- c. Prepare positive and negative cell lysates. See the Sample Preparation and Storage section above for recommended sample handling procedures.
 - Thaw cell lysate samples on ice and dilute them immediately before use. Keep on ice during all manipulations and discard all remaining thawed, unused material.
 - Dilute cell lysate and 5% blocking solution-B together in complete lysis buffer to a final concentration of 0.8 $\mu\text{g}/\mu\text{L}$ of lysate and 0.5% blocking solution-B. This will deliver 20 μg of lysate in 25 μL per well.

For example, to prepare 200 μL of 0.8 $\mu\text{g}/\mu\text{L}$ lysate and 0.5% blocking solution-B, combine the following:

- 20 μL 5% blocking solution-B
 - 80 μL 2 mg/mL lysate
 - 100 μL complete lysis buffer
- You may prepare a dilution series at this point if desired. Use a stock of complete lysis buffer with 0.5% blocking solution-B (dilute 5% blocking solution-B 1:10 in complete lysis buffer) for any subsequent lysate dilutions.

- ## 2. Wash and Add Samples:
- Wash the plate 3 times with 300 μL /well of Tris Wash Buffer. Add 25 μL of sample per well. Seal the plate with an adhesive plate seal, and incubate for 1 hour with vigorous shaking (300–1000 rpm) at room temperature.

You may prepare detection antibody solution during incubation.

Notes

Shaking the plate typically accelerates capture at the working electrode.

Store solutions containing MSD Blocker A at 2–8°C; discarded after 14 days.

Keep complete lysis buffer ice-cold during all manipulations.

If working with purified protein, only a few nanograms per well will generally provide a strong assay signal. Purified recombinant proteins may exhibit differences in both signal and background as compared to native proteins in cell lysates.

Samples, including cell lysates, may be used neat or diluted.

It is not possible to prepare serial dilutions in the MSD plate. Use microcentrifuge tubes or a separate 96-well polypropylene plate.

The sensitivity of MSD immunoassays rivals that of ELISAs and Western blots. The amount of sample required for a given assay will depend on the abundance of the analyte in the matrix and the affinities of the antibodies used.

3. **Wash and Add Detection Antibody Solution:** Wash the plate 3 times with 300 μL /well of Tris Wash Buffer. Add 25 μL of detection antibody solution to each well of the MSD plate. Seal the plate with an adhesive plate seal, and incubate for 1 hour with vigorous shaking (300–1000 rpm) at room temperature.

You may prepare 1X read buffer during incubation.

4. **Wash and Read:** Wash the plate 3 times with 300 μL /well of Tris Wash Buffer. Add 150 μL of 1X Read Buffer T to each well of the MSD plate.

Analyze the plate on the SECTOR Imager. No incubation in read buffer is required before reading the plate.

You may keep excess diluted read buffer in a tightly sealed container at room temperature for later use.

Bubbles introduced when adding read buffer will interfere with imaging of the plate and produce unreliable data. Use reverse pipetting technique to avoid creating bubbles.

Due to the varying nature of each research application, you should investigate assay stability before allowing plates to sit with read buffer for extended periods.

Typical Data

Representative results for the Phospho-c-Jun (Ser63) assay are illustrated below. The signal and ratio values provided are examples; individual results may vary depending upon the samples tested. Western blot analyses of each lysate type were performed with phospho-c-Jun and total c-Jun antibodies and are shown for comparison. Serum starved NIH 3T3 cells (negative) were harvested 15 minutes after UV irradiation (40 mJ/cm²) (positive). Whole cell lysates were added to MSD MULTI-SPOT 4-spot plates coated with anti-phospho-c-Jun (Ser63) antibody on one of the four spatially distinct electrodes per well. Phosphorylated c-Jun was detected with anti-total c-Jun antibody conjugated with MSD SULFO-TAG reagent.

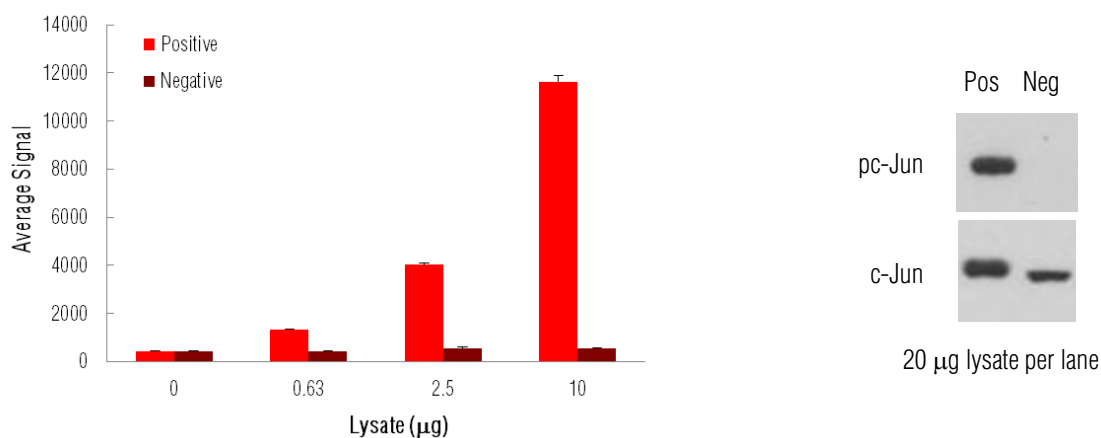


Figure 2: Sample data generated with Phospho-c-Jun (Ser63) assay. Increased signal is observed with the titration of pc-Jun positive cell lysate. Signal for negative lysate remains low throughout the titration. The Phospho-c-Jun (Ser63) assay provides a quantitative measure of the data obtained with the traditional Western blot.

Lysate Titration

Data for pc-Jun positive and negative NIH 3T3 cell lysates using the Phospho-c-Jun (Ser63) assay are presented below.

Lysate (µg)	Positive			Negative			P/N
	Average Signal	StdDev	%CV	Average Signal	StdDev	%CV	
0	430	8	2.0	439	12	2.7	
0.63	1337	6	0.4	448	14	3.2	3.0
2.5	4022	86	2.1	533	89	16.7	7.5
10	11 628	271	2.3	561	3	0.5	21

Assay Components

The capture and detection antibodies used in this assay are listed below. They cross-react with human, mouse, and rat cell lysates.

Analyte	Source Species	
	MSD Capture Antibody	MSD Detection Antibody
Phospho-c-Jun	Mouse Monoclonal	Mouse Monoclonal

References

1. Cho H, Black SC, Looper D, Shi M, Kelly-Sullivan D, Timofeevski S, Siegel K, Yu XH, McDonnell SR, Chen P, Yie J, Ogilvie KM, Fraser J, Briscoe CP. Pharmacological characterization of a small molecule inhibitor of c-Jun kinase. *Am J Physiol Endocrinol Metab.* 2008 Nov;295(5):E1142-51.
2. Yang R, Wilcox DM, Haasch DL, Jung PM, Nguyen PT, Voorbach MJ, Doktor S, Brodjian S, Bush EN, Lin E, Jacobson PB, Collins CA, Landschulz KT, Trevillyan JM, Rondinone CM, Surowy TK. Liver-specific knockdown of JNK1 up-regulates proliferator-activated receptor gamma coactivator 1 beta and increases plasma triglyceride despite reduced glucose and insulin levels in diet-induced obese mice. *J Biol Chem.* 2007 Aug 3;282(31):22765-74.
3. Gowan SM, Hardcastle A, Hallsworth AE, Valenti MR, Hunter LJ, de Haven Brandon AK, Garrett MD, Raynaud F, Workman P, Aherne W, Eccles SA. Application of meso scale technology for the measurement of phosphoproteins in human tumor xenografts. *Assay Drug Dev Technol.* 2007 Jun;5(3):391-401.

Appendix: Suggested Cell Lysis Protocols

Preparation in Culture Flask or Petri Dish

Suspension Cells. Pellet cells by centrifugation at 500 x g for 3 minutes at 2–8°C. Discard supernatant and wash the pellet once with cold PBS. Pellet cells again, discard supernatant, and resuspend in complete lysis buffer at 1–5 x 10⁷ cells per mL. Incubate on ice for 30 minutes. (A shorter incubation time of 15 minutes may be adequate for many targets.) Clear cellular debris from the lysate by centrifuging (≥10 000 x g) for 10 minutes at 2–8°C. Discard the pellet and determine the protein concentration in the lysate using a detergent-compatible protein assay such as a bicinchoninic acid (BCA) assay. Unused lysates should be aliquoted, quickly frozen in a dry ice-ethanol bath, and stored at ≤-70°C.

Adherent Cells. All volumes given are for cells plated on 15 cm dishes. Remove media from the dish and wash cells one time with 5 mL cold PBS. Add 2 mL PBS to each dish, scrape the cells from the surface of the dish, and transfer into 15 mL conical tubes. Pellet the cells by centrifugation at 500 x g for 3 minutes at 2–8°C. Discard supernatant and resuspend cells in 0.5–2 mL of complete lysis buffer per dish. (Alternatively, cells can be lysed by adding 1–2 mL of complete lysis buffer per 15 cm dish after completely removing the PBS wash buffer. Cell lysate can be collected by snapping the dish surface prior to the clarifying spin.) Incubate on ice for 30 minutes. A shorter incubation time of 15 minutes may be adequate for many targets. Clear cellular debris from the lysate by centrifuging (≥10 000 x g) for 10 minutes at 2–8°C. Discard the pellet and determine protein concentration in the lysate using a detergent compatible protein assay such as BCA. Unused lysates should be aliquoted, quickly frozen in a dry ice-ethanol bath, and stored at ≤-70°C.

Preparation in 96-well Culture Plate

Successful adaptation to a 96-well culture format depends on cell type and target. First, determine the number of cells of each cell type to be plated per well. MSD generally recommends plating concentrations ranging from 1 x 10⁴ to 10⁵ cells per well; however, the optimal concentrations will vary depending on cell line used.

Suspension Cells. You may lyse many cell types without removing growth medium. For flat bottom plates, design the experiment so that the final suspension cell volume per well is such that a concentrated complete lysis buffer (prepared by the user) can be added to the well to achieve a final 1X lysis buffer concentration in the well. For example, 40 µL of 5X complete lysis buffer added to a well containing 160 µL of cell culture medium would provide a 1X concentration of complete lysis buffer.

For conical microwell plates, perform lysis by pelleting the cells, removing most of the growth medium, and adding a constant amount of 1X complete lysis buffer.

Adherent Cells. Plate cells on coated tissue culture plates to reduce variability due to cells lost as growth medium is removed. Treat cells as desired. Gently aspirate growth medium from the microwell plate to avoid disrupting the cell monolayer. A PBS wash step is not required and can introduce variability as cells may detach during the wash step. Add 100 µL of 1X complete lysis buffer per well. You may modify lysis volume for different cell types or applications.

You will need to determine the optimum cell lysis time. Some targets are immediately available for detection. Other targets may require an incubation step at room temperature or on ice with gentle agitation.

Carefully pipet cell lysate onto prepared plate and proceed with assay protocol. Note: It is important to transfer a constant volume and to avoid introducing air bubbles by pipetting too vigorously.

Summary Protocol

MSD 96-well Phospho-c-Jun (Ser63) Assay Kit

*MSD provides this summary protocol for your convenience.
Please read the entire detailed protocol prior to performing the
Phospho-c-Jun (Ser63) assay.*

Reagent Preparation

Prepare Tris Wash Buffer.
Prepare blocking solutions.
Prepare antibody dilution buffer.
Prepare detection antibody solution by diluting 50X detection antibody 50-fold in antibody dilution buffer.
Prepare 1X Read Buffer T by diluting 4X Read Buffer T 4-fold with deionized water.

Step 1: Block Plate and Prepare Samples

Add 150 μ L/well of blocking solution.
Incubate at room temperature with vigorous shaking (300-1000 rpm) for 1 hour.
Prepare complete lysis buffer just prior to sample dilution.
Prepare positive and negative cell lysates and keep on ice until use.

Step 2: Wash and Add Sample

Wash the plate 3 times with 300 μ L/well of Tris Wash Buffer.
Add 25 μ L/well of sample.
Incubate at room temperature with vigorous shaking (300-1000 rpm) for 1 hour.

Step 3: Wash and Add Detection Antibody Solution

Wash the plate 3 times with 300 μ L/well of Tris Wash Buffer.
Add 25 μ L/well of 1X detection antibody solution.
Incubate at room temperature with vigorous shaking (300-1000 rpm) for 1 hour.

Step 4: Wash and Read Plate

Wash the plate 3 times with 300 μ L/well of Tris Wash Buffer.
Add 150 μ L/well of 1X Read Buffer T.
Analyze plate on SECTOR Imager within 5 minutes of adding read buffer.

|

	1	2	3	4	5	6	7	8	9	10	11	12
A	<input type="checkbox"/>	<input type="checkbox"/>	<input type="checkbox"/>	<input type="checkbox"/>	<input type="checkbox"/>	<input type="checkbox"/>	<input type="checkbox"/>	<input type="checkbox"/>	<input type="checkbox"/>	<input type="checkbox"/>	<input type="checkbox"/>	<input type="checkbox"/>
B	<input type="checkbox"/>	<input type="checkbox"/>	<input type="checkbox"/>	<input type="checkbox"/>	<input type="checkbox"/>	<input type="checkbox"/>	<input type="checkbox"/>	<input type="checkbox"/>	<input type="checkbox"/>	<input type="checkbox"/>	<input type="checkbox"/>	<input type="checkbox"/>
C	<input type="checkbox"/>	<input type="checkbox"/>	<input type="checkbox"/>	<input type="checkbox"/>	<input type="checkbox"/>	<input type="checkbox"/>	<input type="checkbox"/>	<input type="checkbox"/>	<input type="checkbox"/>	<input type="checkbox"/>	<input type="checkbox"/>	<input type="checkbox"/>
D	<input type="checkbox"/>	<input type="checkbox"/>	<input type="checkbox"/>	<input type="checkbox"/>	<input type="checkbox"/>	<input type="checkbox"/>	<input type="checkbox"/>	<input type="checkbox"/>	<input type="checkbox"/>	<input type="checkbox"/>	<input type="checkbox"/>	<input type="checkbox"/>
E	<input type="checkbox"/>	<input type="checkbox"/>	<input type="checkbox"/>	<input type="checkbox"/>	<input type="checkbox"/>	<input type="checkbox"/>	<input type="checkbox"/>	<input type="checkbox"/>	<input type="checkbox"/>	<input type="checkbox"/>	<input type="checkbox"/>	<input type="checkbox"/>
F	<input type="checkbox"/>	<input type="checkbox"/>	<input type="checkbox"/>	<input type="checkbox"/>	<input type="checkbox"/>	<input type="checkbox"/>	<input type="checkbox"/>	<input type="checkbox"/>	<input type="checkbox"/>	<input type="checkbox"/>	<input type="checkbox"/>	<input type="checkbox"/>
G	<input type="checkbox"/>	<input type="checkbox"/>	<input type="checkbox"/>	<input type="checkbox"/>	<input type="checkbox"/>	<input type="checkbox"/>	<input type="checkbox"/>	<input type="checkbox"/>	<input type="checkbox"/>	<input type="checkbox"/>	<input type="checkbox"/>	<input type="checkbox"/>
H	<input type="checkbox"/>	<input type="checkbox"/>	<input type="checkbox"/>	<input type="checkbox"/>	<input type="checkbox"/>	<input type="checkbox"/>	<input type="checkbox"/>	<input type="checkbox"/>	<input type="checkbox"/>	<input type="checkbox"/>	<input type="checkbox"/>	<input type="checkbox"/>

	1	2	3	4	5	6	7	8	9	10	11	12
A	<input type="checkbox"/>	<input type="checkbox"/>	<input type="checkbox"/>	<input type="checkbox"/>	<input type="checkbox"/>	<input type="checkbox"/>	<input type="checkbox"/>	<input type="checkbox"/>	<input type="checkbox"/>	<input type="checkbox"/>	<input type="checkbox"/>	<input type="checkbox"/>
B	<input type="checkbox"/>	<input type="checkbox"/>	<input type="checkbox"/>	<input type="checkbox"/>	<input type="checkbox"/>	<input type="checkbox"/>	<input type="checkbox"/>	<input type="checkbox"/>	<input type="checkbox"/>	<input type="checkbox"/>	<input type="checkbox"/>	<input type="checkbox"/>
C	<input type="checkbox"/>	<input type="checkbox"/>	<input type="checkbox"/>	<input type="checkbox"/>	<input type="checkbox"/>	<input type="checkbox"/>	<input type="checkbox"/>	<input type="checkbox"/>	<input type="checkbox"/>	<input type="checkbox"/>	<input type="checkbox"/>	<input type="checkbox"/>
D	<input type="checkbox"/>	<input type="checkbox"/>	<input type="checkbox"/>	<input type="checkbox"/>	<input type="checkbox"/>	<input type="checkbox"/>	<input type="checkbox"/>	<input type="checkbox"/>	<input type="checkbox"/>	<input type="checkbox"/>	<input type="checkbox"/>	<input type="checkbox"/>
E	<input type="checkbox"/>	<input type="checkbox"/>	<input type="checkbox"/>	<input type="checkbox"/>	<input type="checkbox"/>	<input type="checkbox"/>	<input type="checkbox"/>	<input type="checkbox"/>	<input type="checkbox"/>	<input type="checkbox"/>	<input type="checkbox"/>	<input type="checkbox"/>
F	<input type="checkbox"/>	<input type="checkbox"/>	<input type="checkbox"/>	<input type="checkbox"/>	<input type="checkbox"/>	<input type="checkbox"/>	<input type="checkbox"/>	<input type="checkbox"/>	<input type="checkbox"/>	<input type="checkbox"/>	<input type="checkbox"/>	<input type="checkbox"/>
G	<input type="checkbox"/>	<input type="checkbox"/>	<input type="checkbox"/>	<input type="checkbox"/>	<input type="checkbox"/>	<input type="checkbox"/>	<input type="checkbox"/>	<input type="checkbox"/>	<input type="checkbox"/>	<input type="checkbox"/>	<input type="checkbox"/>	<input type="checkbox"/>
H	<input type="checkbox"/>	<input type="checkbox"/>	<input type="checkbox"/>	<input type="checkbox"/>	<input type="checkbox"/>	<input type="checkbox"/>	<input type="checkbox"/>	<input type="checkbox"/>	<input type="checkbox"/>	<input type="checkbox"/>	<input type="checkbox"/>	<input type="checkbox"/>