

MSD® Total ERK1/2 Assay Whole Cell Lysate Kit

For quantitative determination in human, mouse, and rat whole cell lysate samples



Alzheimer's Disease
BioProcess
Cardiac
Cell Signaling
Clinical Immunology
Cytokines
Hypoxia
Immunogenicity
Inflammation
Metabolic
Oncology
Toxicology
Vascular

Catalog Numbers

Total ERK1/2 Assay Whole Cell Lysate Kit	
Kit size	
1 plate	K151DXD-1
5 plates	K151DXD-2
20 plates	K151DXD-3

Phospho-ERK1/2 Whole Cell Lysate Set	
200 µg	C11CM-1

Ordering information

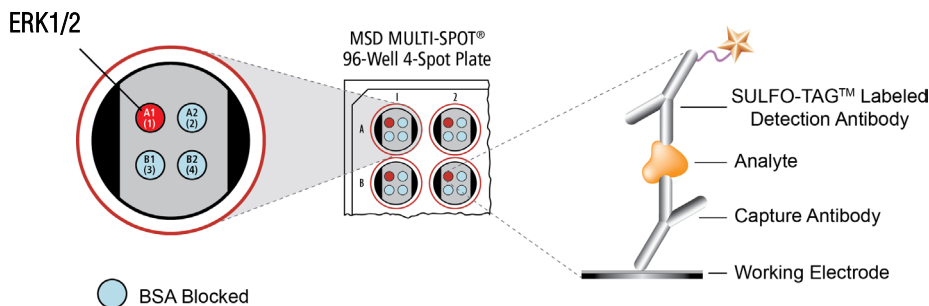
MSD Customer Service
Phone: 1-301-947-2085
Fax: 1-301-990-2776
Email: CustomerService@mesoscale.com

Company Address

MESO SCALE DISCOVERY®
A division of
Meso Scale Diagnostics, LLC.
9238 Gaither Road
Gaithersburg, MD 20877 USA

www.mesoscale.com®

For Research Use Only.
Not for use in diagnostic procedures.



ERK (Extracellular signal Regulated Kinases) 1 and 2, are proline-directed serine/threonine protein kinases, also known as p44 MAPK (Mitogen-Activated Protein Kinase) and p42 MAPK, respectively. These closely-related kinase isoforms, identified by their molecular weight, are activated by various extracellular signals including growth factors, cytokines, hormones, and neurotransmitters. The activation occurs through the phosphorylation of threonine 202 and tyrosine 204 of ERK1 and threonine 185 and tyrosine 187 of ERK2 by the upstream kinases MEK1 and MEK2. Activated ERK1/2 phosphorylates targets in both the cytosol and the nucleus. Cytoplasmic substrates for ERK include SOS, MNK1/2, and the 90 kDa ribosomal protein S6 kinases. Nuclear translocation of activated ERK affects gene expression and DNA replication by the phosphorylation of MSK 1 and 2 and the transcription factors Elk-1, Sap1, and Sap2.

The MSD Total ERK1/2 Assay is available on 96-well 4-Spot plates. This datasheet outlines the performance of the assay.

Typical Data

Representative results for the Total ERK1/2 Assay are illustrated below. The signal and ratio values provided below are example data; individual results may vary depending upon the samples tested. Western blot analyses of each lysate type were performed with phospho-ERK1/2 (Thr202/Tyr204; Thr185/Tyr187) and total ERK1/2 antibodies and are shown below for comparison.

Logarithmically growing Jurkat cells were treated with PMA (200 nM; 15 minutes) (positive) or LY294002 (50 µM; 2.5 hours) (negative). Whole cell lysates were added to MSD MULTI-SPOT® 4-Spot plates coated with anti-total ERK1/2 antibody on one of the four spatially distinct electrodes within a well. Total ERK1/2 was detected with anti-total ERK1/2 antibody conjugated with MSD SULFO-TAG™ reagent.

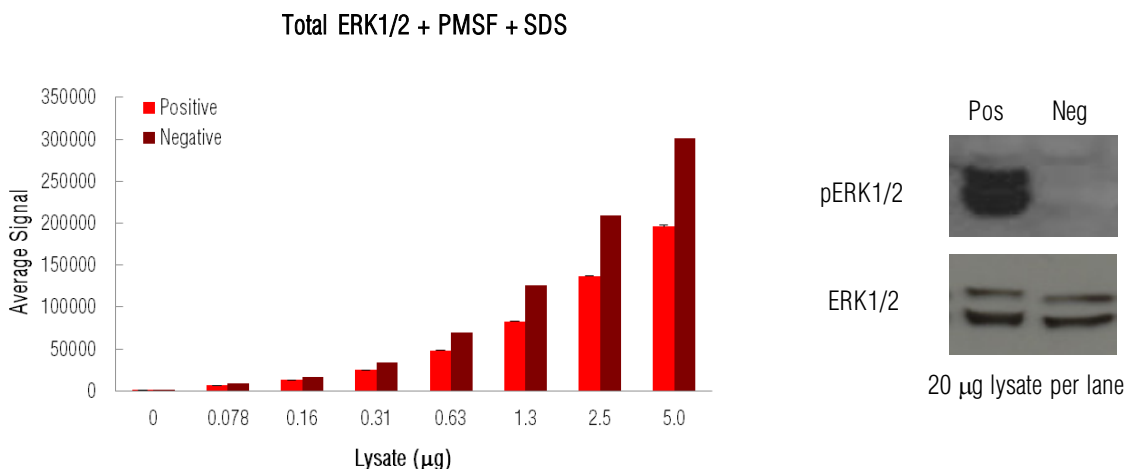


Fig. 1: Sample data generated with the MULTI-ARRAY® Total ERK1/2 Assay. Increased signals were observed with the titration of both pERK1/2 positive and negative cell lysates. The Total ERK1/2 Assay provides a quantitative measure of the data obtained with the traditional Western blot.

MSD Phosphoprotein Assays

Lysate Titration

Data for pERK1/2 positive and negative Jurkat cell lysates using the MULTI-ARRAY Total ERK1/2 Assay are presented below.

Lysate (µg)	Positive			Negative			P/N
	Average Signal	StdDev	%CV	Average Signal	StdDev	%CV	
0	653	15	2.3	709	21	3.0	
0.078	6858	471	6.9	8864	68	0.8	0.8
0.16	13163	962	7.3	17032	530	3.1	0.8
0.31	24988	1479	5.9	34442	1334	3.9	0.7
0.63	48321	2353	4.9	69276	507	0.7	0.7
1.3	82995	3214	3.9	126071	2421	1.9	0.7
2.5	136849	6824	5.0	209256	2675	1.3	0.7
5.0	196096	9104	4.6	300653	3852	1.3	0.7

MSD Advantage

- **Multiplexing:** Multiple analytes can be measured in one well using typical sample amounts of 25 µg/well or less without compromising speed or performance
- **Large dynamic range:** Linear range of up to five logs enables the measurement of native levels of biomarkers in normal and diseased samples without multiple dilutions
- **Minimal background:** The stimulation mechanism (electricity) is decoupled from the signal (light)
- **Simple protocols:** Only labels near the electrode surface are detected, enabling no-wash assays
- **Flexibility:** Labels are stable, non-radioactive, and conveniently conjugated to biological molecules
- **High sensitivity and precision:** Multiple excitation cycles of each label enhance light levels and improve sensitivity

For a complete list of products, please visit our website at www.mesoscale.com

References using MSD's platform for the measurement of phosphoproteins

1. Carnahan J, Beltran PJ, Babij C, Le Q, Rose MJ, Vonderfecht S, Kim JL, Smith AL, Nagapudi K, Broome MA, Fernando M, Kha H, Belmontes B, Radinsky R, Kendall R, Burgess TL. Selective and potent Raf inhibitors paradoxically stimulate normal cell proliferation and tumor growth. *Mol Cancer Ther.* 2010 Aug;9(8):2399-410. Epub 2010 Jul 27.
2. Engstrom L, Pinzon-Ortiz MC, Li Y, Chen SC, Kinsley D, Nelissen R, Fine JS, Mihara K, Manfra D. Characterization of a murine keyhole limpet hemocyanin (KLH)-delayed-type hypersensitivity (DTH) model: role for p38 kinase. *Int Immunopharmacol.* 2009 Sep;9(10):1218-27. Epub 2009 Jul 16.
3. Wu X, Ge H, Lemon B, Weiszmann J, Gupte J, Hawkins N, Li X, Tang J, Lindberg R, Li Y. Selective activation of FGFR4 by an FGF19 variant does not improve glucose metabolism in ob/ob mice. *Proc Natl Acad Sci U S A.* 2009 Aug 25;106(34):14379-84. Epub 2009 Aug 12.
4. Brake R, Starnes C, Lu J, Chen D, Yang S, Radinsky R, Borges L. Effects of palifermin on antitumor activity of chemotherapeutic and biological agents in human head and neck and colorectal carcinoma xenograft models. *Mol Cancer Res.* 2008 Aug;6(8):1337-46.
5. Gowan SM, Hardcastle A, Hallsworth AE, Valenti MR, Hunter LJ, de Haven Brandon AK, Garrett MD, Raynaud F, Workman P, Aherne W, Eccles SA. Application of meso scale technology for the measurement of phosphoproteins in human tumor xenografts. *Assay Drug Dev Technol.* 2007 Jun;5(3):391-401.

MESO SCALE DISCOVERY, MESO SCALE DIAGNOSTICS, WWW.MESOSCALE.COM, MSD, MSD (DESIGN), DISCOVERY WORKBENCH, QUICKPLEX, MULTI-ARRAY, MULTI-SPOT, SULFO-TAG, SECTOR, SECTOR HTS, SECTOR PR, 4-SPOT (DESIGN) and SPOT THE DIFFERENCE are trademarks and/or service marks of Meso Scale Diagnostics, LLC.

© 2011 Meso Scale Diagnostics, LLC. All rights reserved.

For Research Use Only. Not for use in diagnostic procedures.

