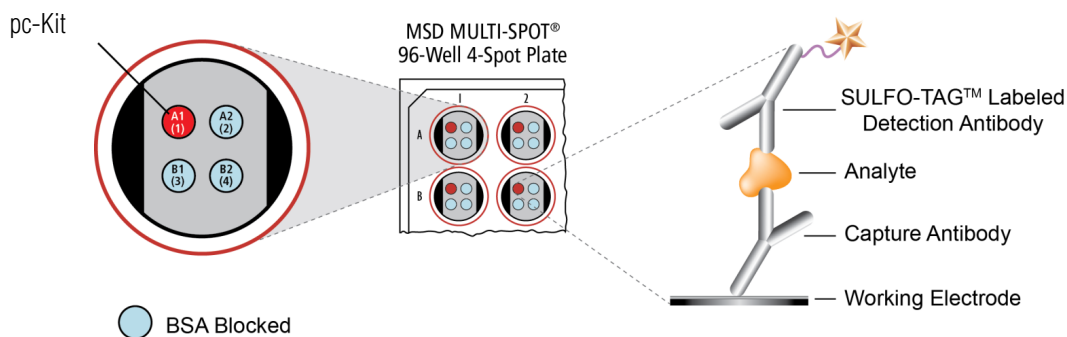


MSD[®] Phospho-c-Kit (Tyr721) Assay Whole Cell Lysate Kit

For quantitative determination in human whole cell lysate samples



The MSD Phospho-c-Kit (Tyr721) Assay is available on 96-well 4-Spot plates. This datasheet outlines the performance of the assay.

Typical Data

Representative results for the Phospho-c-Kit (Tyr721) are illustrated below. The signal and ratio values provided below are example data; individual results may vary depending upon the samples tested. Western blot analyses of each lysate type were performed with phospho-c-Kit and total c-Kit antibodies and are shown below for comparison. Growing M07e cells were starved in low serum for 30 minutes (negative) and treated with SCF (100 ng/mL; 2 minutes) (positive). Whole cell lysates were added to MSD MULTI-SPOT[®] 4-Spot plates coated with anti-phospho-c-Kit antibody on one of the four spatially distinct electrodes per well. Phosphorylated c-Kit was detected with anti-total c-Kit antibody conjugated with MSD SULFO TAG[™] reagent.

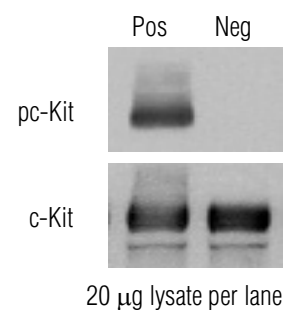
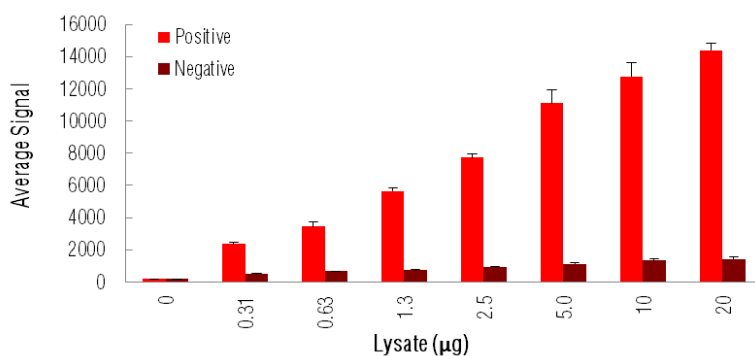


Fig. 1: Sample data generated with MULTI-ARRAY[®] Phospho-c-Kit (Tyr721) Assay. Increased signal is observed with the titration of pc-Kit positive cell lysate. The Phospho-c-Kit (Tyr721) Assay provides a quantitative measure of the data obtained with the traditional Western blot.

Alzheimer's Disease
BioProcess
Cardiac
Cell Signaling
Clinical Immunology
Cytokines
Hypoxia
Immunogenicity
Inflammation
Metabolic
Oncology
Toxicology
Vascular

Catalog Numbers

Phospho-c-Kit (Tyr721)
Whole Cell Lysate Kit

Kit size	
1 plate	K151DPD-1
5 plates	K151DPD-2
20 plates	K151DPD-3

Phospho-c-Kit (Tyr721)
Whole Cell Lysate Set

200 µg	C11DP-1
--------	---------

Ordering information

MSD Customer Service
Phone: 1-301-947-2085
Fax: 1-301-990-2776
Email: CustomerService@mesoscale.com

Company Address

MESO SCALE DISCOVERY[®]
A division of
Meso Scale Diagnostics, LLC.
9238 Gaither Road
Gaithersburg, MD 20877 USA

www.mesoscale.com[®]

For Research Use Only.
Not for use in diagnostic
procedures.

MSD Phosphoprotein Assays

Lysate Titration

Data for positive and negative M07e cell lysates using the MULTI-ARRAY Phospho-c-Kit (Tyr721) are presented below.

Lysate (µg)	Positive			Negative			P/N
	Average Signal	StdDev	%CV	Average Signal	StdDev	%CV	
0	182	12	6.6	185	3	1.6	
0.31	2354	90	3.8	479	40	8.4	4.9
0.63	3457	247	7.1	657	22	3.3	5.3
1.3	5653	185	3.3	733	51	7.0	7.7
2.5	7722	248	3.2	921	51	5.5	8.4
5.0	11102	836	7.5	1109	72	6.5	10
10	12773	850	6.7	1347	80	5.9	9.5
20	14389	427	3.0	1420	117	8.2	10

MSD Advantage

- **Multiplexing:** Multiple analytes can be measured in one well using typical sample amounts of 25 µg/well or less without compromising speed or performance
- **Large dynamic range:** Linear range of up to five logs enables the measurement of native levels of biomarkers in normal and diseased samples without multiple dilutions
- **Minimal background:** The stimulation mechanism (electricity) is decoupled from the signal (light)
- **Simple protocols:** Only labels near the electrode surface are detected, enabling no-wash assays
- **Flexibility:** Labels are stable, non-radioactive, and conveniently conjugated to biological molecules
- **High sensitivity and precision:** Multiple excitation cycles of each label enhance light levels and improve sensitivity

For a complete list of products, please visit our website at www.mesoscale.com

MESO SCALE DISCOVERY, MESO SCALE DIAGNOSTICS, WWW.MESOSCALE.COM, MSD, MSD (DESIGN), DISCOVERY WORKBENCH, QUICKPLEX, MULTI-ARRAY, MULTI-SPOT, SULFO-TAG, SECTOR, SECTOR HTS, SECTOR PR, 4-SPOT (DESIGN) and SPOT THE DIFFERENCE are trademarks and/or service marks of Meso Scale Diagnostics, LLC.
© 2011 Meso Scale Diagnostics, LLC. All rights reserved.

For Research Use Only. Not for use in diagnostic procedures.

