

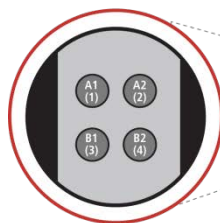
MSD® Human I-309 Kit

For quantitative determination in human serum and plasma

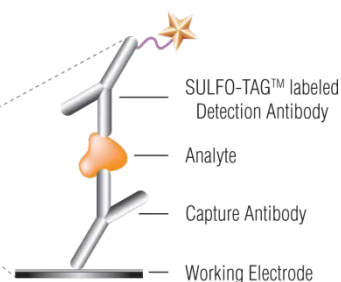
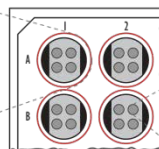


Alzheimer's Disease
BioProcess
Cardiac
Cell Signaling
Clinical Immunology
Cytokines
Growth Factors
Hypoxia
Immunogenicity
Inflammation
Metabolic
Oncology
Toxicology
Vascular

1. **I-309**
2. *BSA blocked*
3. *BSA blocked*
4. *BSA blocked*



MSD MULTI-SPOT®
96-Well 4-Spot Plate



Chemokines are the largest cytokine family; they exert effects by binding to G-protein-coupled receptors. I-309/CCL1 is a human chemokine which is structurally related to other pro-inflammatory cytokines sharing three conserved C-terminal basic amino acids.¹ I-309 is a selective ligand for the CCR8 receptor; receptor binding modulates recruitment of monocytes, natural killer cells, immature B cells, and dendritic cells.²⁻⁵ In addition to pro-inflammatory functions, I-309 modulates apoptosis and angiogenesis⁶ and protects murine thymic lymphoma cell lines against dexamethasone-induced apoptosis.²

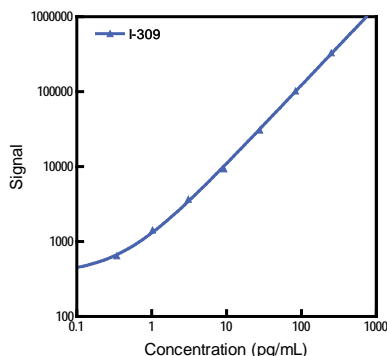
The assay is available on 96-well, 4-spot plates. Representative data from the assay is presented below. Visit www.mesoscale.com for a complete listing of our products.

Catalog Numbers

Human I-309 Kit	
Kit Size	Catalog #
1 plate	K151NXD-1
5 plates	K151NXD-2
25 plates	K151NXD-4

Assay Sensitivity

The following standard curves illustrate the dynamic range of the Human I-309 assay.



I-309	
Average LLOD (ng/mL)	0.431
LLOD Range (ng/mL)	0.408–0.461

The lower limit of detection (LLOD) is a calculated concentration based on a signal 2.5 standard deviations above the background (zero calibrator blank). The LLOD shown above was calculated based on 4 runs.

Ordering Information

MSD Customer Service
Phone: 1-301-947-2085
Fax: 1-301-990-2776
Email: CustomerService@mesoscale.com

Company Address

MESO SCALE DISCOVERY®
A division of
Meso Scale Diagnostics, LLC.
1601 Research Boulevard
Rockville, MD 20850 USA

www.mesoscale.com®

For Research Use Only.
Not for use in diagnostic
procedures.

MSD Advantage

- **Multiplexing:** Multiple analytes can be measured in one well using typical sample volumes of 25 µL or less without compromising speed or performance
- **Large dynamic range:** Linear range of up to five logs enables the measurement of native levels of biomarkers in normal and diseased samples without multiple dilutions
- **Minimal background:** The stimulation mechanism (electricity) is decoupled from the response (light signal), minimizing matrix interference
- **Simple protocols:** Only labels bound near the electrode surface are excited, enabling assays with fewer washes
- **Flexibility:** Labels are stable, non-radioactive, and conveniently conjugated to biological molecules
- **High sensitivity and precision:** Multiple rounds of label excitation and emission enhance light levels and improve sensitivity

For a complete list of products, please visit our website at www.mesoscale.com.

MSD Cytokine Assays

References

1. Miller MD, Krangel MS. The human cytokine I-309 is a monocyte chemoattractant. *Proc Natl Acad Sci USA*. 1992 Apr 1;89(7):2950-4.
2. Zingoni A, et al. The chemokine receptor CCR8 is preferentially expressed in Th2 but not Th1 cells. *J Immunol*. 1998 Jul 15;161(2):547-51.
3. Tiffany HL, et al. Identification of CCR8: a human monocyte and thymus receptor for the CC chemokine I-309. *J Exp Med*. 1997 Jul 7;186(1):165-70.
4. Roos RS, et al. Identification of CCR8, the receptor for the human CC chemokine I-309. *J Biol Chem*. 1997 Jul 11;272(28):17251-4.
5. Goya I, et al. Identification of CCR8 as the specific receptor for the human beta-chemokine I-309 cloning and molecular characterization of murine CCR8 as the receptor for TCA-3. *J Immunol*. 1998 Feb 15;160(4):1975-81.
6. Denis C, et al. C-Terminal Clipping of Chemokine CCL1/I-309 Enhances CCR8-Mediated Intracellular Calcium Release and Anti-Apoptotic Activity. *PLoS One*. 2012;7(3):e34199. Epub 2012 Mar 2.

MESO SCALE DISCOVERY, MESO SCALE DIAGNOSTICS, WWW.MESOSCALE.COM, MSD, MSD (DESIGN), DISCOVERY WORKBENCH, QUICKPLEX, MULTI-ARRAY, MULTI-SPOT, SULFO-TAG, STREPTAVIDIN GOLD, SECTOR, SECTOR HTS, SECTOR PR, 4-SPOT (DESIGN) and SPOT THE DIFFERENCE are trademarks and/or service marks of Meso Scale Diagnostics, LLC. © 2012 Meso Scale Diagnostics, LLC. All rights reserved.

For Research Use Only. Not for use in diagnostic procedures.

