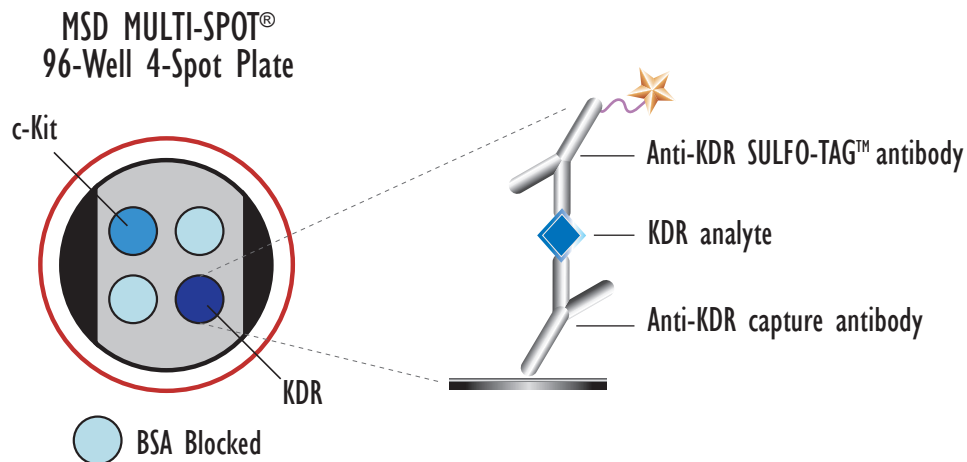
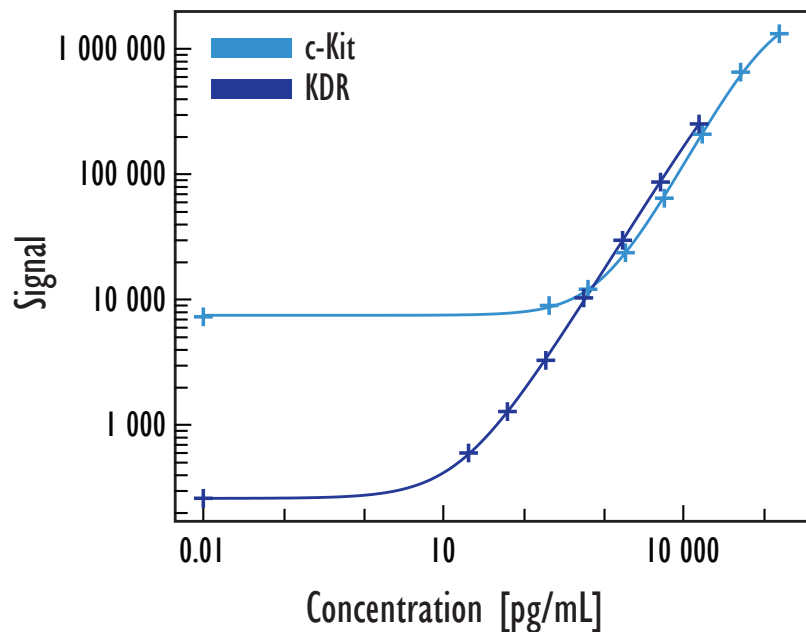


MULTI-SPOT[®] Human Growth Factor Panel II Assay

Detection of c-Kit and KDR in Human Serum and Plasma Samples



| | c-Kit | KDR |
|---------------|-------|-----|
| LLOD (pg/mL): | 116 | 2.0 |

LLOD (Lower Limit of Detection) is defined as 2.5x stdev above the background.

| Calibrator (pg/mL) | c-Kit | | Calibrator (pg/mL) | KDR | |
|--------------------|---------|-----|--------------------|--------|-----|
| | Signal | %CV | | Signal | %CV |
| 0 | 7183 | 2.9 | 0 | 263 | 1.8 |
| 206 | 9183 | 6.0 | 21 | 598 | 5.2 |
| 617 | 12363 | 3.0 | 62 | 1294 | 2.9 |
| 1852 | 23809 | 3.9 | 190 | 3314 | 2.7 |
| 5556 | 65121 | 3.5 | 560 | 10278 | 3.2 |
| 16667 | 212667 | 1.2 | 1700 | 29721 | 2.1 |
| 50000 | 639426 | 2.2 | 5000 | 86159 | 0.5 |
| 150000 | 1289232 | 3.6 | 15000 | 251796 | 2.8 |

| Kit Size | Catalog Number |
|------------------|----------------|
| 1 plate | K15030C-1 |
| 5 plates | K15030C-2 |
| 20 plates | K15030C-3 |
| 20 plates (Base) | K15030A-3 |

Above is representative calibration curve data
Sample dilution of 1:50 is recommended

MULTI-SPOT[®] Human Growth Factor Panel II Assay

Detection of c-Kit and KDR in Human Serum and Plasma Samples

Recovery of Dilution Linearity

| | Dilution Factor | c-Kit | KDR |
|--------------|-----------------|-------|-----|
| Serum Pool 1 | 1:2 | 112 | 103 |
| | 1:4 | 102 | 97 |
| | 1:8 | 104 | 106 |
| Serum Pool 2 | 1:2 | 120 | 111 |
| | 1:4 | 111 | 107 |
| | 1:8 | 108 | 101 |

- Measured analyte levels in samples diluted in assay diluent
- % recovery = $\frac{\text{measured value} * \text{dilution factor} * 100}{\text{predicted value}}$
- Values presented are from pooled samples
- Samples diluted 1:50; dilution factors indicated are in addition to 1:50 dilution

Endogenous Analyte Levels in Samples

| | c-Kit (ng/mL) | KDR (ng/mL) |
|-------------|---------------|-------------|
| Serum | 165 | 31 |
| EDTA Plasma | 140 | 28 |

- Normal pooled samples
- Detected level is above LLOQ
- Average CVs for measured samples was less than 8%
- Samples diluted 1:50 for use in assay

Recovery of Spiked Calibrator

| | Spike Level (ng/mL) | c-Kit | KDR |
|----------|---------------------|-------|-----|
| Plasma 1 | 156 | 94 | 93 |
| | 625 | 98 | 96 |
| | 2,500 | 104 | 106 |
| Plasma 2 | 156 | 84 | 82 |
| | 625 | 82 | 78 |
| | 2,500 | 103 | 105 |
| Plasma 3 | 156 | 99 | 105 |
| | 625 | 103 | 100 |
| | 2,500 | 113 | 119 |
| Plasma 4 | 156 | 95 | 96 |
| | 625 | 100 | 97 |
| | 2,500 | 110 | 114 |
| Plasma 5 | 156 | 120 | 93 |
| | 625 | 113 | 97 |
| | 2,500 | 112 | 108 |

- Measured analyte spiked into human samples
- % recovery = $\frac{\text{measured value} * 100}{\text{expected value}}$
- Samples diluted 1:50