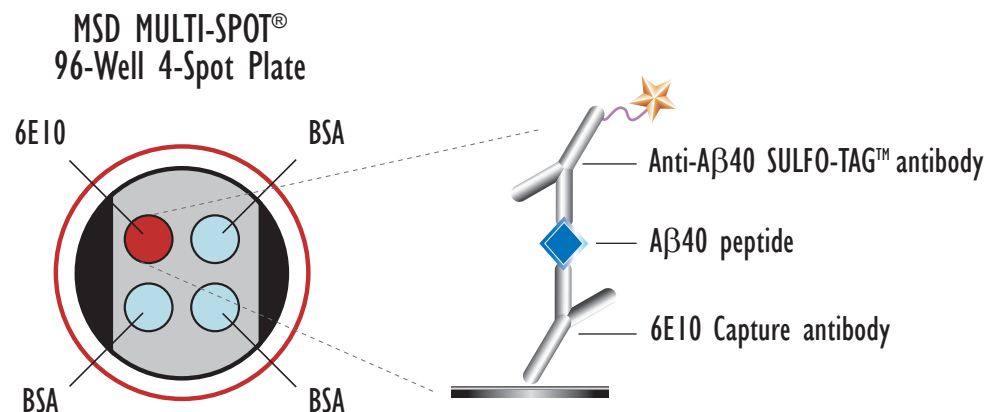
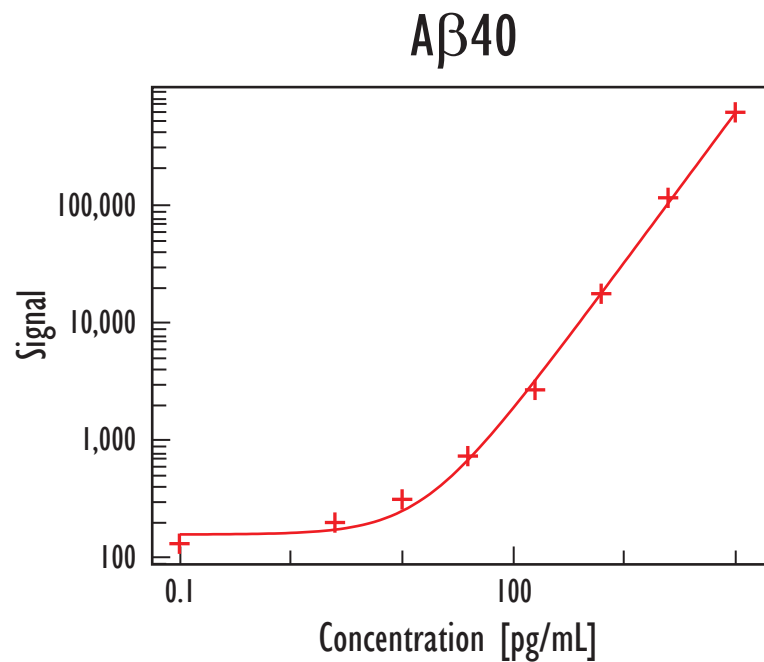


MULTI-ARRAY[®] Human A β 40 Ultra-Sensitive Assay

Detection of Human Beta Amyloid 40 in Cerebral Spinal Fluid Samples



Synthetic A β 40 peptides were diluted in 10% BSA/TBST and added to MSD MULTI-SPOT, 96-well 4 Spot plates coated with 6E10 antibody. A β 40 peptides were detected with anti-A β 40 labeled with MSD SULFO-TAG reagent. A representative titration curve is shown.

Peptide (pg/mL)	A β 40		
	Average	StdDev	%CV
0	137	4	3
2.4	207	25	12
9.8	321	32	10
39	749	59	8
156	2,715	54	2
625	17,728	403	2
2,500	115,496	1,889	2
10,000	607,187	13,386	2

Kit Size	Catalog Number
1 plate	K151FTE-1
5 plates	K151FTE-2
20 plates	K151FTE-3
20 plates (Base)	K151FTA-3

A β 40 Lower Limit of Detection 4 pg/mL

LLOD (Lower Limit of Detection) is defined as 2.5x stdev above the background.

MULTI-ARRAY[®] Human A β 40 Ultra-Sensitive Assay

Detection of Human Beta Amyloid 40 in Cerebral Spinal Fluid Samples

Spike Recovery

- Measured analyte from spike recovery in 3 pooled human CSF

$$\% \text{ recovery} = \frac{(\text{measured value} * 100)}{\text{expected value}}$$

Spike (pg/mL)	CSF Pool 1	CSF Pool 2	CSF Pool 3
500	101	97	101
250	106	91	99
125	101	100	101

Dilution Linearity

- Measured analyte levels in 3 pooled human CSF samples followed by subsequent dilution

$$\% \text{ recovery} = \frac{(\text{measured value} * \text{dilution factor} * 100)}{\text{predicted value}}$$

Dilution Factor	CSF Pool 1	CSF Pool 2	CSF Pool 3
1/2	109	119	111
1/4	94	99	105