

MSD[®] sAPP Recombinant Protein Standards

Recombinant Human sAPP α and sAPP β

Contents: 2.5 μ g each, recombinant sAPP α and sAPP β proteins

Concentration: 50 μ g/mL

Volume: 50 μ L each

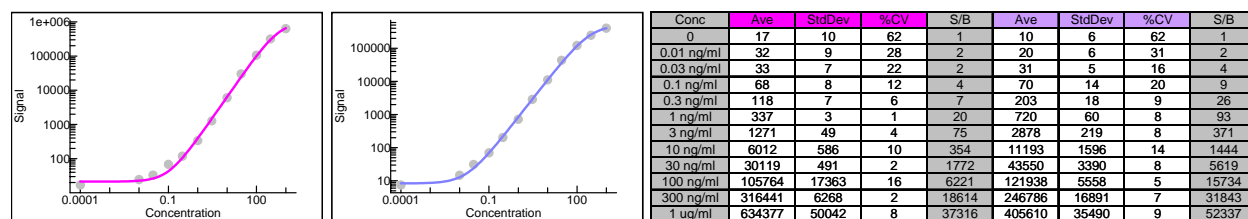
Preparation: Recombinant human sAPP proteins were purified from overexpressing mammalian cells.

Storage: **Store at -80°C.** After initial thaw, protein should be divided into five single-use aliquots (9 μ L, allowing for 6 μ L recovery) to avoid additional freeze/thaw cycles.

Quality Control: Recombinant proteins have been analyzed by SDS-PAGE and MSD MULTI-SPOT[®] Assays.

MSD MULTI-SPOT[®] Assay Results

Typical titration curve for recombinant sAPP proteins using the MSD MULTI-SPOT sAPP α / β duplex assay.



Detection limits (3 S.D. over background)

sAPP α : 120 pg/ml

sAPP β : 52 pg/ml

SDS-PAGE

A 0.5 mg sample of each sAPP protein was run on a 4-12% Bis-Tris NuPAGE gel to demonstrate purity (>95%).

