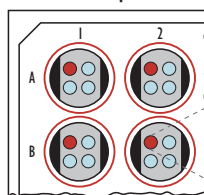


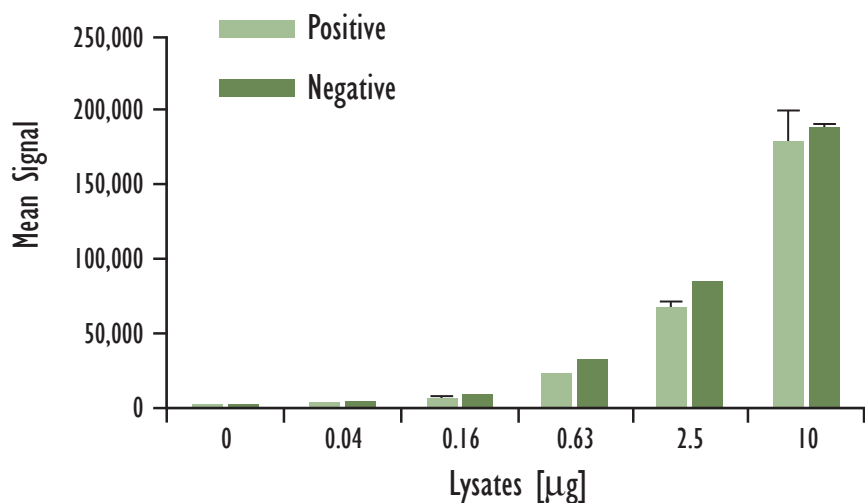
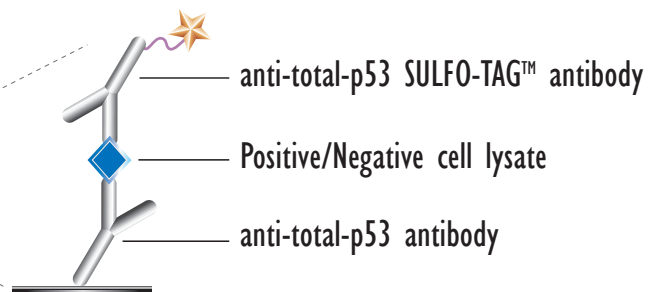
MULTI-ARRAY[®] Total p53 Assay

Detection of p53 in Whole Cell Lysate Samples

MSD MULTI-SPOT[®]
96-Well 4-Spot Plate

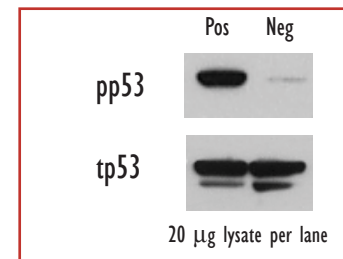


● BSA

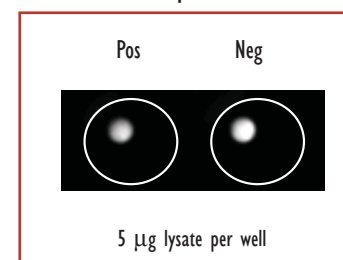


Lysates (μg)	pp53 Positive			pp53 Negative			P/N
	Average	StdDev	%CV	Average	StdDev	%CV	
0	58	27	47	29	22	76	
0.04	1,367	131	10	1,756	120	7	0.8
0.16	5,227	929	18	7,626	423	6	0.7
0.63	21,451	962	4	29,932	1,177	4	0.7
2.5	66,969	3,914	6	82,259	1,901	2	0.8
10	177,763	21,584	12	188,994	1,732	1	0.9

Traditional Western



MSD Experimental



Growing HT-29 cells (negative) were harvested 1 hr after UV irradiation (40 mJ/cm²)(positive). Whole cell lysates were added to MSD MULTI-SPOT 4-Spot plates coated with anti-total-p53 antibody on one of the four spatially distinct electrodes per well. Total p53 was detected with anti-total-p53 antibody labeled with MSD SULFO-TAG reagent.

Kit Size	SI2400	SI6000
1 plate	KI50DBD-1	KI10DBD-1
5 plates	KI50DBD-2	KI10DBD-2
20 plates	KI50DBD-3	KI10DBD-3
20 plates (Base)	KI50DBA-3	KI10DBA-3