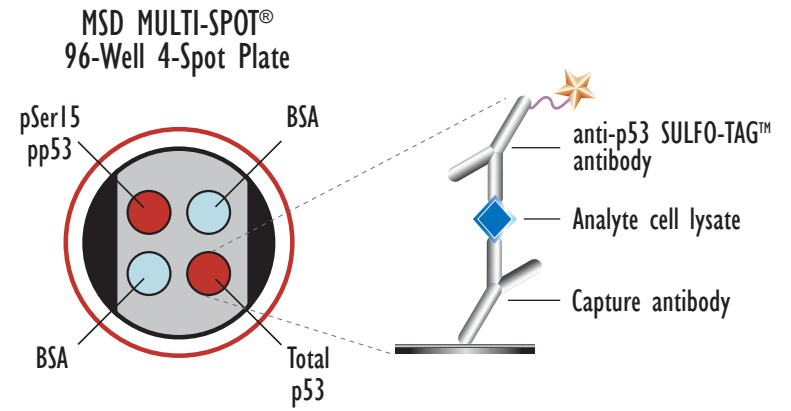
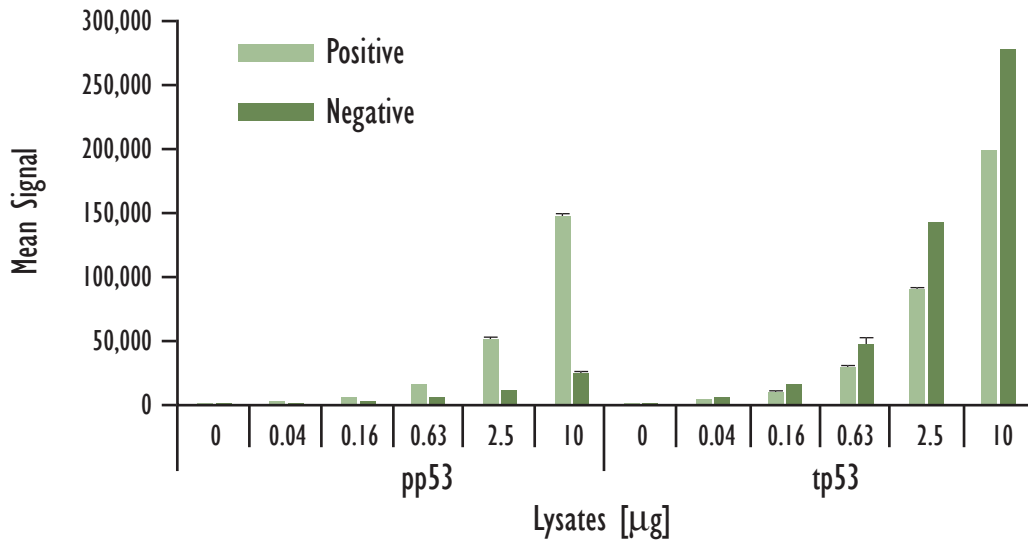


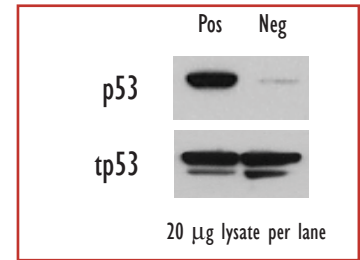
MULTI-SPOT[®] Phospho-(Ser 15), Total p53 Assay

Simultaneous Detection of Phosphorylated and Total p53 in Whole Cell Lysate Samples

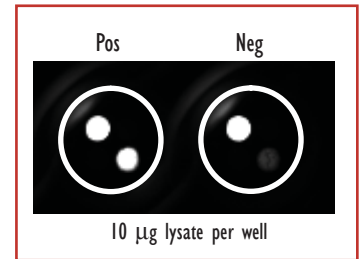


Growing HT29 cells (negative) were harvested 1 hour after UV irradiation (40 mJ/cm²) (positive). Whole cell lysates were added to MSD MULTI-SPOT 4-Spot plates coated with anti-phospho-p53 antibody and anti-total-p53 antibody on two of the four spatially distinct electrodes per well. Phosphorylated and total p53 were detected with anti-total-p53 antibody labeled with MSD SULFO-TAG reagent.

Traditional Western



MSD Experimental



	Lysates (µg)	p53 Positive			p53 Negative			P/N
		Average	StdDev	%CV	Average	StdDev	%CV	
pp53	0	30	5	17	28	9	33	
	0.04	1,334	23	2	382	2	1	3.5
	0.16	4,583	436	10	1,219	25	2	3.8
	0.63	15,193	319	2	4,102	290	7	3.7
	2.5	51,045	522	1	10,424	85	1	4.9
	10	146,814	3,160	2	23,871	822	3	6.2
tp53	0	28	8	28	29	1	5	
	0.04	2,634	206	8	4,331	164	4	0.6
	0.16	9,054	1,136	13	14,867	629	4	0.6
	0.63	28,498	698	2	46,364	5,786	12	0.6
	2.5	89,099	2,449	3	141,111	187	0	0.6
	10	199,210	722	0	277,193	28	0	0.7

Kit Size	SI2400	SI6000
1 plate	KI5113D-1	KI1113D-1
5 plates	KI5113D-2	KI1113D-2
20 plates	KI5113D-3	KI1113D-3
20 plates (Base)	KI5113A-3	KI1113A-3