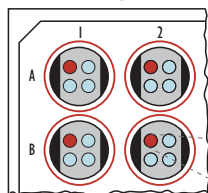
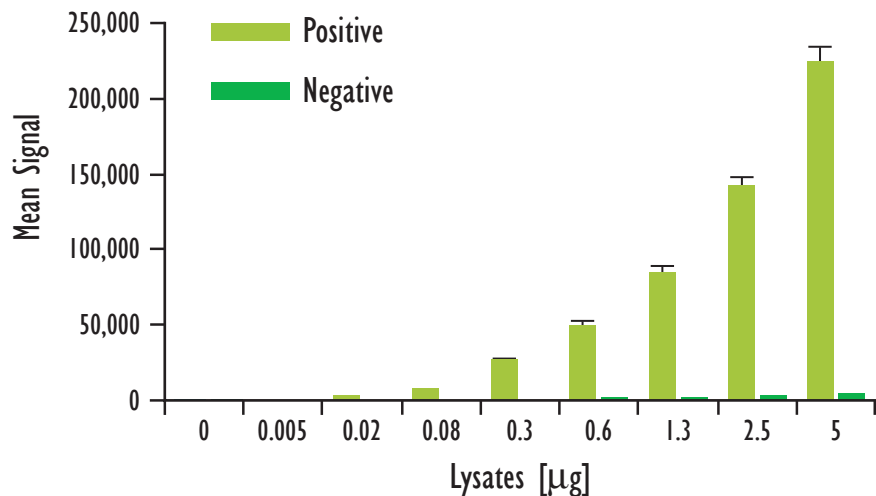
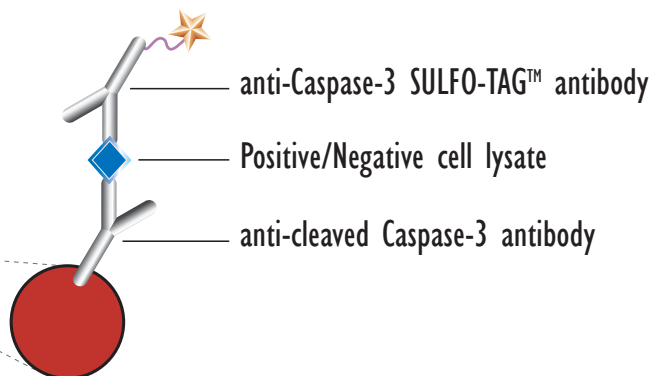


# Cleaved, Caspase-3 Assay

MSD MULTI-SPOT®  
96-Well 4-Spot Plate

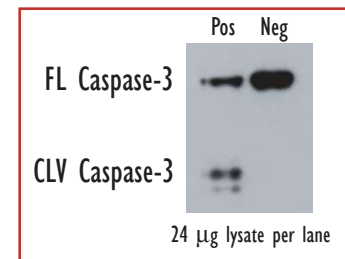


BSA

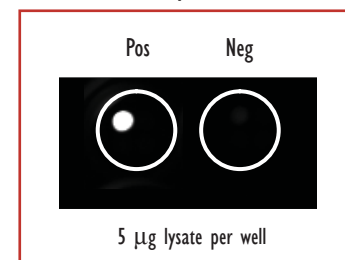


Lysates (µg)	Cleaved Caspase-3 Positive			Cleaved Caspase-3 Negative			P/N
	Average	StdDev	%CV	Average	StdDev	%CV	
0	120	10	8	134	15	11	
0.005	543	60	11	133	12	9	4.1
0.02	1,933	146	8	146	8	6	13.2
0.08	7,013	536	8	223	10	4	31.5
0.3	26,519	972	4	548	19	3	48.4
0.6	48,691	3,491	7	887	50	6	54.9
1.3	83,952	4,669	6	1,417	47	3	59.2
2.5	140,769	6,895	5	2,141	50	2	65.8
5	224,303	9,146	4	3,442	132	4	65.2

Traditional Western



MSD Experimental



Logarithmically growing Jurkat cells (negative) were treated with staurosporine (1 µM; 4 hr)(positive). Whole cell lysates were added to MSD MULTI-SPOT 4-Spot plates coated with anti-cleaved Caspase-3 antibody on one of the four spatially distinct electrodes per well. Cleaved Caspase-3 was detected with an anti-Caspase-3 antibody labeled with MSD SULFO-TAG reagent.



Meso Scale Discovery  
A division of Meso Scale Diagnostics, LLC.  
www.mesoscale.com