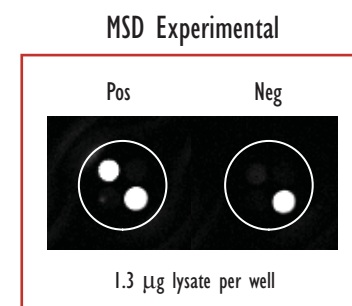
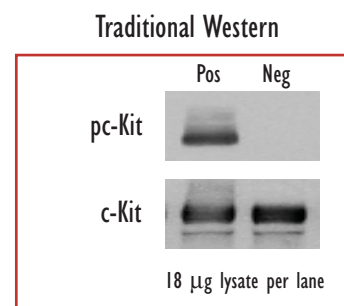
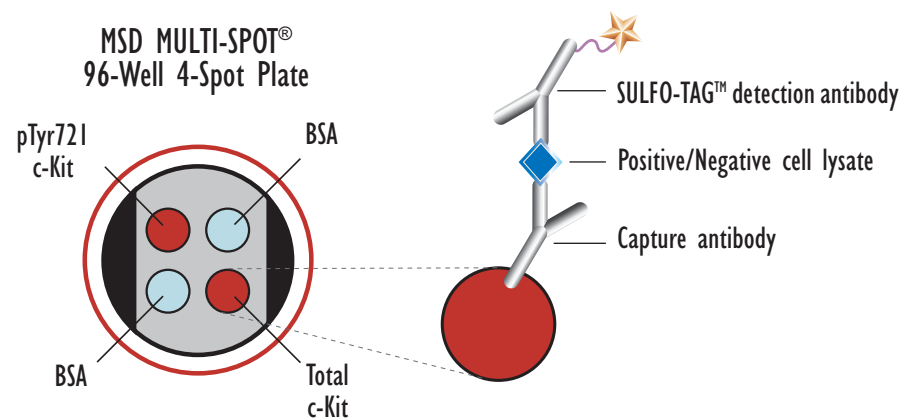
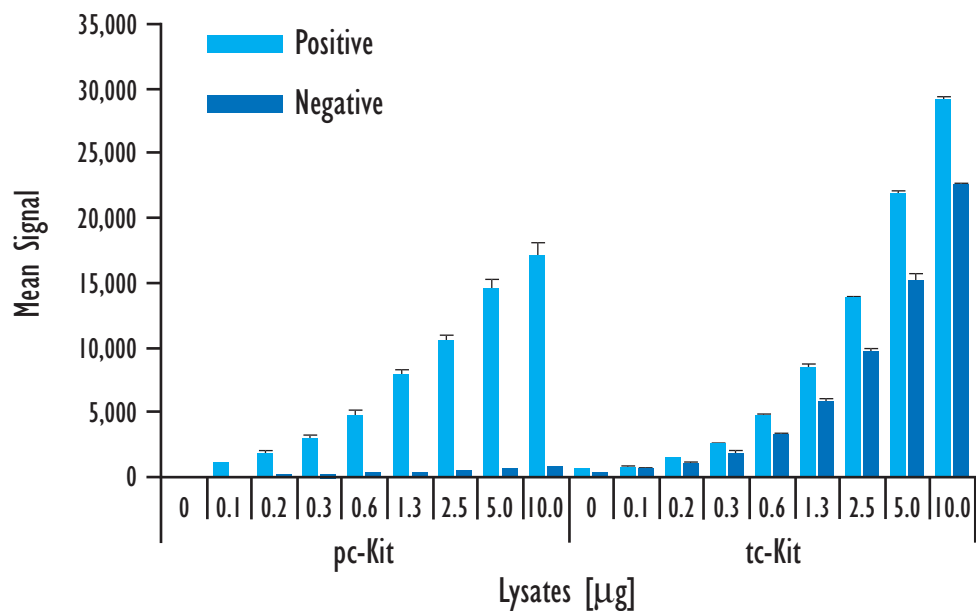


Multiplex c-Kit Assay: Detection of Phosphorylated & Total c-Kit (pTyr721) in the Same Well



	Lysates (µg)	pc-Kit Positive			pc-Kit Negative			P/N
		Average	StdDev	%CV	Average	StdDev	%CV	
pc-Kit	0	36	7	20	37	7	19	
	0.1	999	87	9	52	7	13	19.2
	0.2	1,769	318	18	110	3	2	16.1
	0.3	3,008	284	9	140	5	3	21.4
	0.6	4,742	497	10	229	14	6	20.7
	1.3	7,823	445	6	305	10	3	25.6
	2.5	10,501	420	4	435	18	4	24.1
	5.0	14,574	774	5	583	75	13	25.0
	10.0	17,098	968	6	723	34	5	23.6
tc-Kit	0	568	37	7	304	15	5	
	0.1	799	37	5	665	57	9	1.2
	0.2	1,413	61	4	1,065	154	14	1.3
	0.3	2,481	156	6	1,794	230	13	1.4
	0.6	4,700	146	3	3,203	154	5	1.5
	1.3	8,386	366	4	5,755	287	5	1.5
	2.5	13,818	194	1	9,645	218	2	1.4
	5.0	21,765	271	1	15,144	583	4	1.4
	10.0	29,009	328	1	22,478	260	1	1.3

Growing M07e cells were starved in low serum for 30 min (negative) and treated with SCF (100 ng/mL; 2 min)(positive). Whole cell lysates were added to MSD MULTI-SPOT 4-Spot plates coated with anti-phospho-c-Kit and anti-total-c-Kit antibodies on two of the four spatially distinct electrodes per well. Phosphorylated and total c-Kit were detected with anti-total-c-Kit antibody labeled with MSD SULFO-TAG reagent.