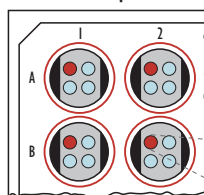
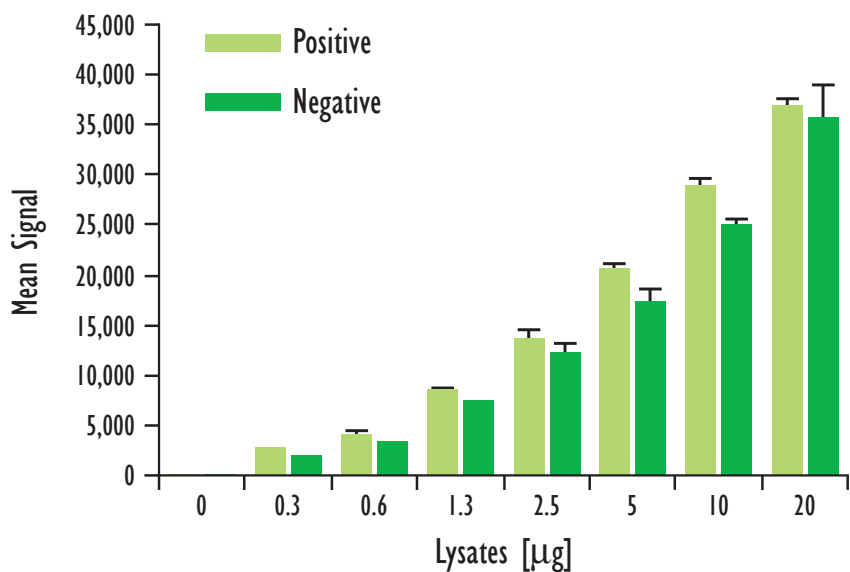
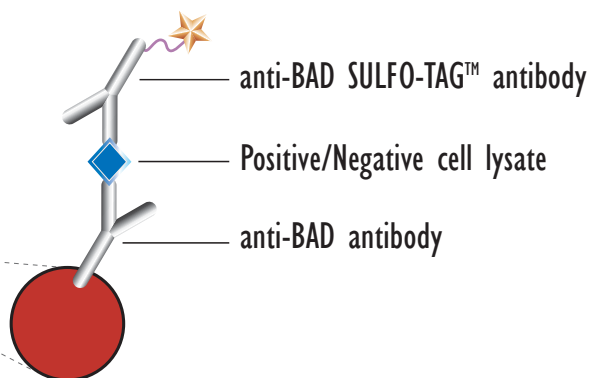


Detection of Total BAD

MSD MULTI-SPOT®
96-Well 4-Spot Plate

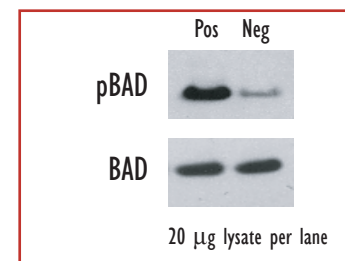


● BSA

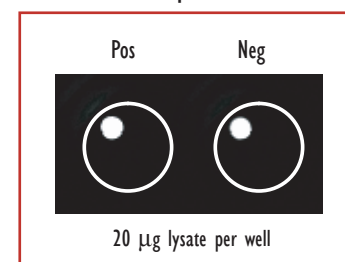


Lysates (µg)	pBAD Positive			pBAD Negative			P/N
	Average	StdDev	%CV	Average	StdDev	%CV	
0	56	3	5	53	6	12	
0.3	2,625	108	4	1,857	161	9	1.4
0.6	4,085	290	7	3,237	39	1	1.3
1.3	8,603	105	1	7,339	61	1	1.2
2.5	13,563	904	7	12,273	933	8	1.1
5	20,499	717	3	17,330	1,220	7	1.2
10	28,860	851	3	25,036	558	2	1.2
20	36,864	694	2	35,635	3,387	10	1

Traditional Western



MSD Experimental



Serum-deprived COS-7 cells (negative) were treated with PMA (200 nM; 1 hr)(positive). Whole cell lysates were added to MSD MULTI-SPOT 4 Spot plates coated with anti-total-BAD antibody on one of the four spatially distinct electrodes per well. Total BAD was detected with an anti-total-BAD antibody labeled with MSD SULFO-TAG reagent.



Meso Scale Discovery

A division of Meso Scale Diagnostics, LLC.
www.mesoscale.com