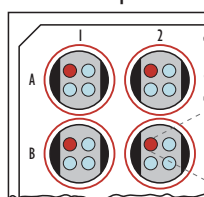


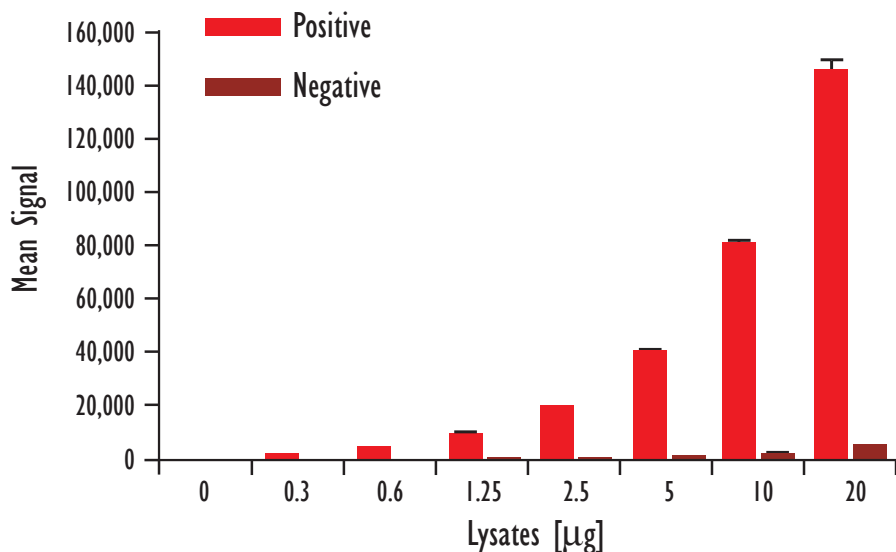
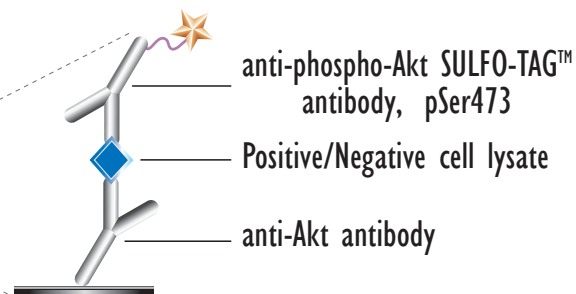
MULTI-ARRAY[®] Phospho-Akt (Ser 473) Assay

Detection of Phosphorylated Akt in Whole Cell Lysate Samples

MSD MULTI-SPOT[®]
96-Well 4-Spot Plate

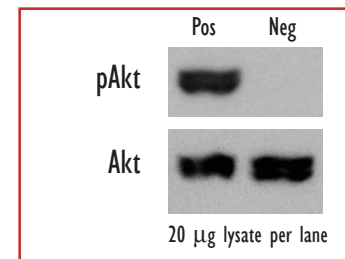


● BSA

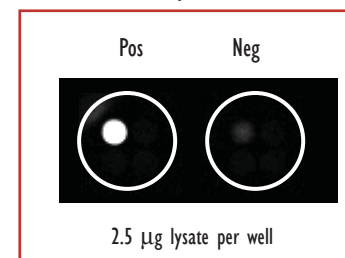


Lysates (µg)	pAkt Positive			pAkt Negative			P/N
	Average	StdDev	%CV	Average	StdDev	%CV	
0	119	9	7	116	12	10	
0.3	2,444	22	1	238	11	4	10.3
0.6	4,857	253	5	310	15	5	15.7
1.25	9,947	839	8	442	19	4	22.5
2.5	19,999	294	1	680	33	5	29.4
5	41,029	509	1	1,252	44	3	32.8
10	81,168	1,014	1	2,600	16	1	31.2
20	145,817	2,902	2	5,925	135	2	24.6

Traditional Western



MSD Experimental



Logarithmically growing Jurkat cells (positive) were treated with LY294002 (50 µM; 2.25 hr) (negative). Whole cell lysates were added to MSD MULTI-SPOT 4-Spot plates coated with anti-total-Akt antibody on one of the four spatially distinct electrodes per well. Phosphorylated Akt was detected with anti-phospho-Akt antibody labeled with MSD SULFO-TAG reagent.

Kit Size	SI2400	SI6000
1 plate	KI51CAD-1	KI11CAD-1
5 plates	KI51CAD-2	KI11CAD-2
20 plates	KI51CAD-3	KI11CAD-3
20 plates (Base)	KI51CAA-3	KI11CAA-3