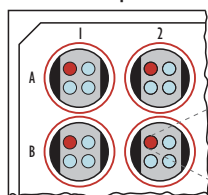


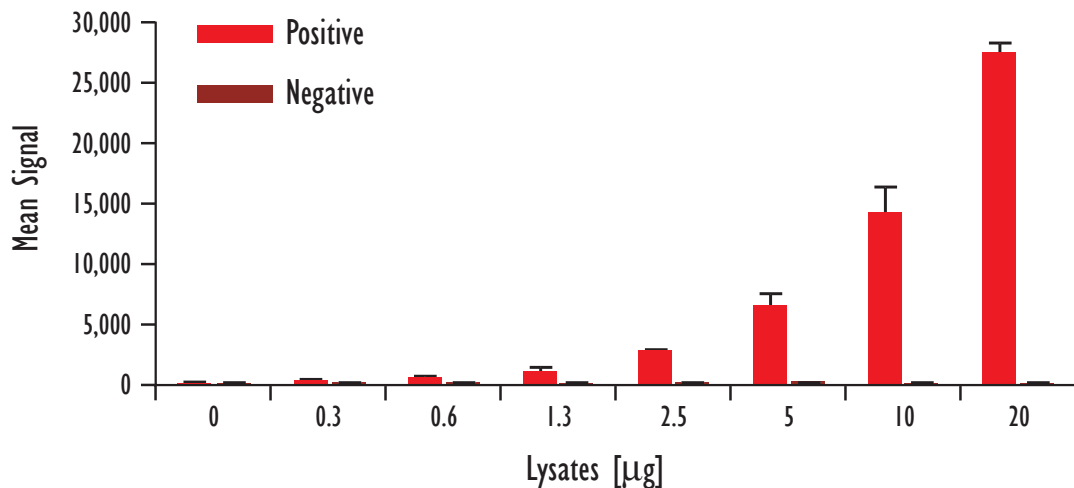
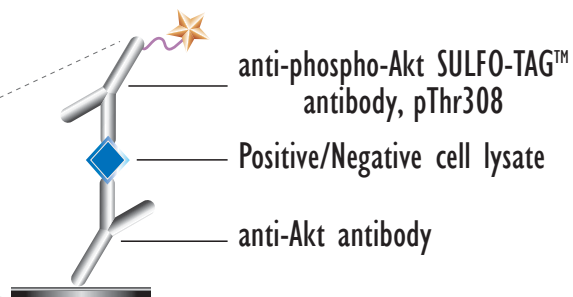
# MULTI-ARRAY<sup>®</sup> Phospho-Akt (Thr 308) Assay

## Detection of Phosphorylated Akt in Whole Cell Lysate Samples

MSD MULTI-SPOT<sup>®</sup>  
96-Well 4-Spot Plate

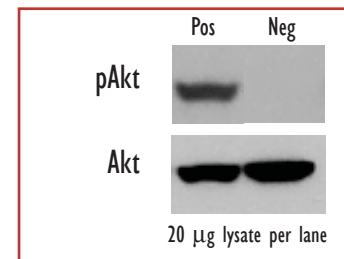


● BSA

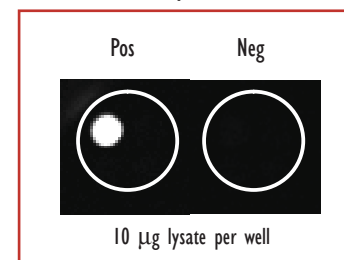


Lysates (µg)	pAkt (Thr308) Positive			pAkt (Thr308) Negative			P/N
	Average	StdDev	%CV	Average	StdDev	%CV	
0	148	15	10	158	10	7	0.9
0.3	392	14	4	201	15	7	2.0
0.6	699	25	4	206	10	5	3.4
1.3	1,210	201	17	198	19	9	6.1
2.5	2,863	66	2	235	6	2	12.2
5	6,624	910	14	229	23	10	29.0
10	14,235	2,172	15	214	17	8	66.5
20	27,519	594	2	180	6	3	152.6

Traditional Western



MSD Experimental



Confluent NIH3T3 cells (negative) were treated with PDGF (100 ng/ml; 5 min) (positive). Whole cell lysates were added to MSD MULTI-SPOT 4-Spot plates coated with anti-total-Akt antibody on one of the four spatially distinct electrodes per well. Phosphorylated Akt was detected with an anti-phospho-Akt Thr308 antibody labeled with MSD SULFO-TAG reagent.

Kit Size	SI2400	SI6000
1 plate	KI51DYD-1	KI11DYD-1
5 plates	KI51DYD-2	KI11DYD-2
20 plates	KI51DYD-3	KI11DYD-3
20 plates (Base)	KI51DYA-3	KI11DYA-3