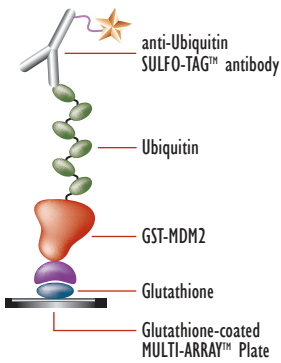


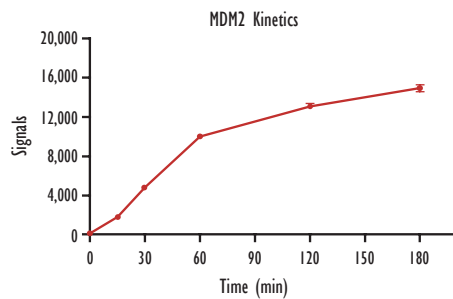
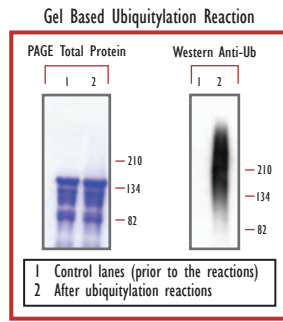
Protein Ubiquitylation Assays from Meso Scale Discovery

MSD offers a variety of Ubiquitin pathway products for whole cell lysate samples including assays for total MDM2 and p53, ubiquitylated MDM2 and p53, and MDM2-p53 complexes. We have also developed a Self-Ubiquitylation Activity Assay in 384-well plates, designed for high-throughput screening applications. Please inquire with your sales representative for additional custom E2 and E3 screening possibilities. Visit www.mesoscale.com for a complete list of product offerings.

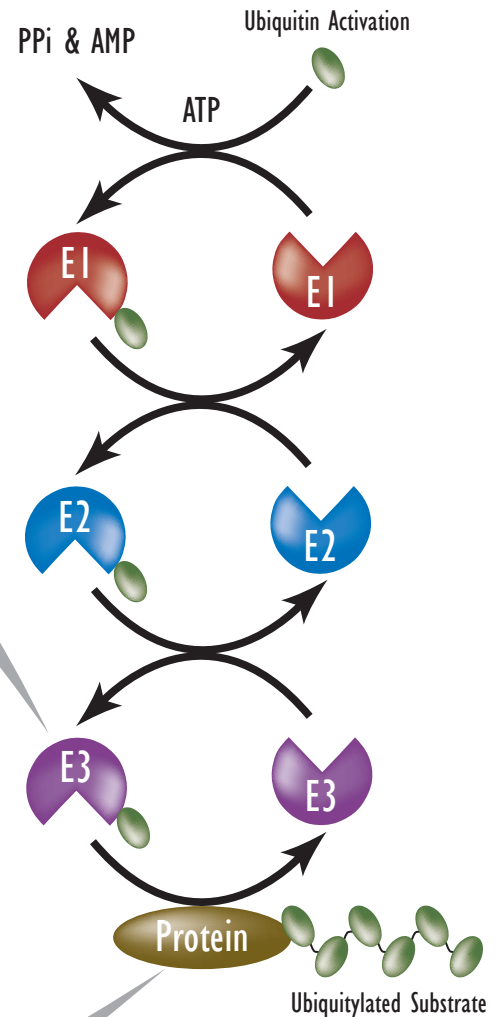
MDM2 Ubiquitylation Assay



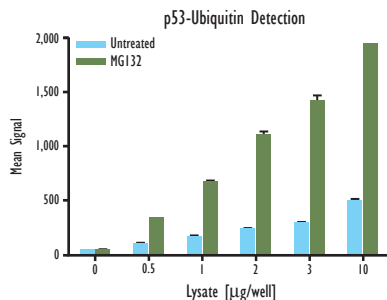
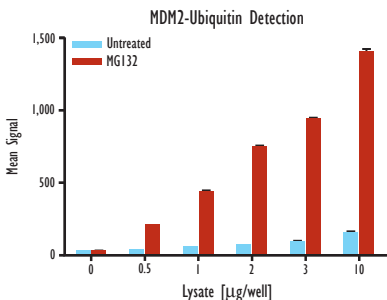
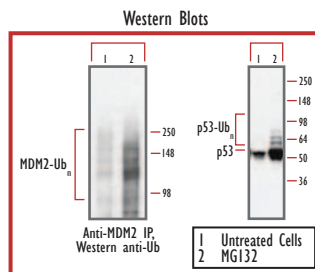
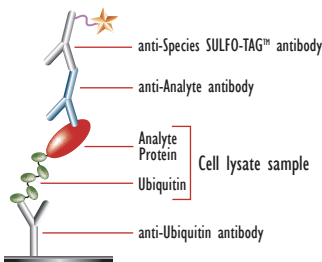
Ubiquitylated MDM2 was detected following incubation of a GST-MDM2 fusion protein with an optimized reaction mixture. The robust activity of the reaction mixture over a prolonged period of time, coupled with the stability of the final reaction product allows for optimal HTS work flows.



Ubiquitin Pathway Assays



Detection of Ubiquitin-Protein Conjugates



Ubiquitylated MDM2 and p53 were detected in whole cell lysate samples. Assays for detection of total MDM2 and p53 in whole cell lysates are also available.

Ubiquitin Pathway Assays

- MDM2-p53 Complex
- Total MDM2
- Ubiquitylated MDM2
- Total p53
- Ubiquitylated p53
- Self-Ubiquitylated 384-Well Activity Assay

For research use only; not for use in diagnostic or therapeutic procedures.

