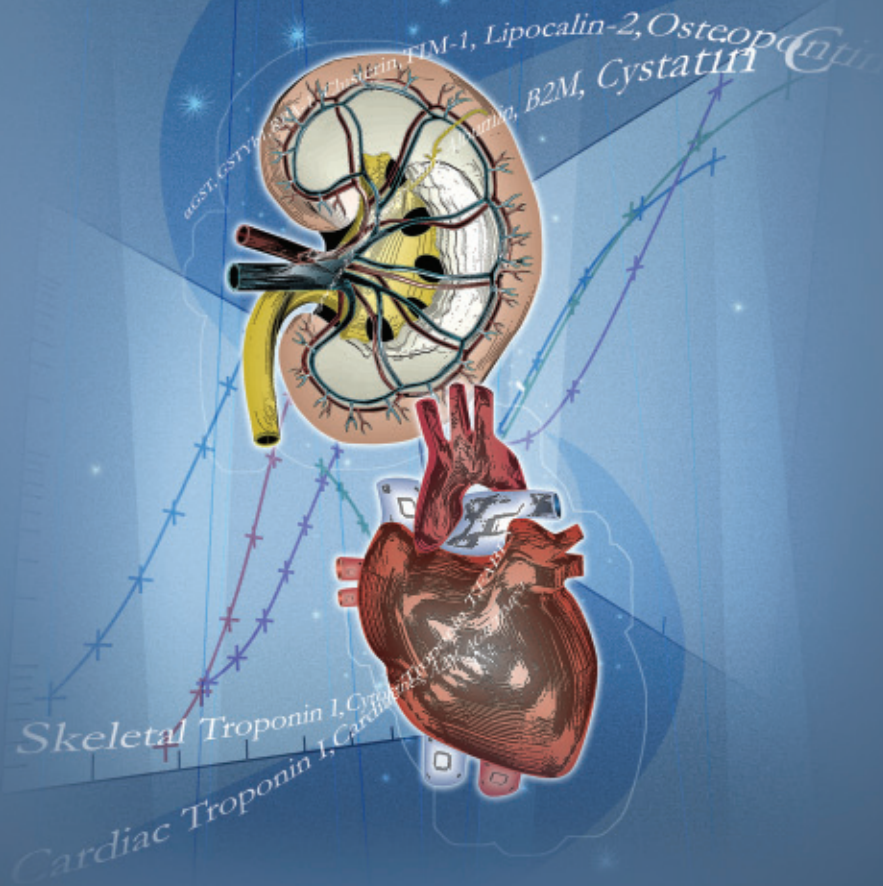


MESO SCALE DISCOVERY® Toxicology Panels



- **Acute Phase Protein Panel 1 (rat):**

A2M, AGP

- **Argutus AKI Test® (rat):**

αGST, GSTYb1, RPA-1

- **Cardiac Injury Panel 2 (rat):**

cTnl, cTnT, FABP3

- **Cardiac Injury Panel 3 (rat):**

cTnl, cTnT, FABP3, Myl3

- **Inflammation Panel 1 (rat) (coming soon):**

Lipocalin-2, TSP-1, TIMP-1, MCP-1

- **Kidney Injury Panel 1 (rat):**

Lipocalin-2, Osteopontin, Albumin, TIM-1

- **Kidney Injury Panel 2 (rat)‡:**

Clusterin, αGST, TIM-1, Cystatin C, Lipocalin-2, Osteopontin, Albumin

- **Liver Injury Panel 1 (rat)‡:**

Arginase-1, αGST

- **Muscle Injury Panel 1 (rat):**

cTnl, cTnT, sTnl, FABP3, Myl3

- **Muscle Injury Panel 2 (rat) (coming soon):**

Parvalbumin, TIMP-1, CK

- **Muscle Injury Panel 3 (mouse) (coming soon):**

cTnl, FABP3, Myl3, sTnl

- **Human Cystatin C‡**

- **Human Luteinizing Hormone (LH)**

- **Human NGAL‡**

- **Human TIMP-1**

- **Rat αGST‡**

- **Rat β2M (coming soon)**

- **Rat BNP (coming soon)**

- **Rat Clusterin**

- **Rat Luteinizing Hormone (LH)‡**

- **Rat NT-proBNP (coming soon)**

- **Rat sTnl**

- **Rat TIM-1/KIM-1/HAVCR**

- **Rat TIMP-1‡**

‡ Available through our prototype printing services

Inquire about Human Kidney Markers:

Albumin, Beta-2 Microglobulin, Clusterin, EGF, αGST, πGST, IL-18, IP-10, Lipocalin-2, MIF, MIG, Osteoactivin, Osteopontin, RBP4, TFF3, Uromodulin, VEGF

For Research Use Only. Not for use in diagnostic procedures.

Ordering Information for Toxicology Panels

Kidney Injury Assays

Analyte	Description	Catalog Number
Argutus AKI Test® (rat) αGST, GSTYb1, RPA-1	Argutus AKI Test® (rat) Kit (1 Plate)	K15156C-1
	Argutus AKI Test® (rat) Kit (5 Plate)	K15156C-2
	Argutus AKI Test® (rat) Kit (25 Plate)	K15156C-4
Kidney Injury Panel 1 (rat) Albumin, TIM-1, Lipocalin-2, Osteopontin	Kidney Injury Panel 1 (rat) Kit (1 Plate)	K15162C-1
	Kidney Injury Panel 1 (rat) Kit (5 Plate)	K15162C-2
	Kidney Injury Panel 1 (rat) Kit (25 Plate)	K15162C-4
Rat TIM-1/KIM-1/HAVCR	Rat TIM-1/KIM-1/HAVCR Kit (1 Plate)	K153JHC-1
	Rat TIM-1/KIM-1/HAVCR Kit (5 Plate)	K153JHC-2
	Rat TIM-1/KIM-1/HAVCR Kit (25 Plate)	K153JHC-4
Rat Clusterin	Rat Clusterin Kit (1 Plate)	K153HXC-1
	Rat Clusterin Kit (5 Plate)	K153HXC-2
	Rat Clusterin Kit (25 Plate)	K153HXC-4

Muscle Injury Assays

Analyte	Description	Catalog Number
Muscle Injury Panel 1 (rat) cTnI, cTnT, FABP3, Myl3, sTnI	Muscle Injury Panel 1 (rat) Kit (1 Plate)	K15181C-1
	Muscle Injury Panel 1 (rat) Kit (5 Plate)	K15181C-2
	Muscle Injury Panel 1 (rat) Kit (25 Plate)	K15181C-4
Muscle Injury Panel 2 (rat) Parvalbumin, TIMP-1, CK	Muscle Injury Panel 2 (rat) Kit (1 Plate)	Custom, please inquire
	Muscle Injury Panel 2 (rat) Kit (5 Plate)	Custom, please inquire
	Muscle Injury Panel 2 (rat) Kit (25 Plate)	Custom, please inquire
Muscle Injury Panel 3 (mouse) cTnI, FABP3, Myl3, sTnI	Muscle Injury Panel 3 (mouse) Kit (1 Plate)	Custom, please inquire
	Muscle Injury Panel 3 (mouse) Kit (5 Plate)	Custom, please inquire
	Muscle Injury Panel 3 (mouse) Kit (25 Plate)	Custom, please inquire
Rat Skeletal Troponin I	Rat Skeletal Troponin I Kit (1 Plate)	K153IMC-1
	Rat Skeletal Troponin I Kit (5 Plate)	K153IMC-2
	Rat Skeletal Troponin I Kit (25 Plate)	K153IMC-4
Cardiac Injury Panel 2 (rat) cTnI, cTnT, FABP3	Cardiac Injury Panel 2 (rat) Serum/Plasma Kit (1 Plate)	K15155C-1
	Cardiac Injury Panel 2 (rat) Serum/Plasma Kit (5 Plate)	K15155C-2
	Cardiac Injury Panel 2 (rat) Serum/Plasma Kit (25 Plate)	K15155C-4
Cardiac Injury Panel 3 (rat) cTnI, cTnT, FABP3, Myl3	Cardiac Injury Panel 3 (rat) Serum/Plasma Kit (1 Plate)	K15161C-1
	Cardiac Injury Panel 3 (rat) Serum/Plasma Kit (5 Plate)	K15161C-2
	Cardiac Injury Panel 3 (rat) Serum/Plasma Kit (25 Plate)	K15161C-4

Inflammation Assays

Analyte	Description	Catalog Number
Inflammation Panel 1 (rat) Lipocalin-2, TSP-1, TIMP-1, MCP-1	Inflammation Panel 1 (rat) Kit (1 Plate)	Custom, please inquire
	Inflammation Panel 1 (rat) Kit (5 Plate)	Custom, please inquire
	Inflammation Panel 1 (rat) Kit (25 Plate)	Custom, please inquire
Acute Phase Protein Panel 1 (rat) A2M, AGP	Acute Phase Protein Panel 1 (rat) Kit (1 Plate)	K15175C-1
	Acute Phase Protein Panel 1 (rat) Kit (5 Plate)	K15175C-2
	Acute Phase Protein Panel 1 (rat) Kit (25 Plate)	K15175C-4
Human TIMP-1	Human TIMP-1 Kit (1 Plate)	K151JFC-1
	Human TIMP-1 Kit (5 Plate)	K151JFC-2
	Human TIMP-1 Kit (25 Plate)	K151JFC-4

Steroid/Hormone Assays

Analyte	Description	Catalog Number
Steroid Hormone Panel 1 (rat/mouse/human) Estradiol, Progesterone, DHEA	Steroid Hormone Panel 1 (rat/mouse/human) Kit (1 Plate)	Custom, please inquire
	Steroid Hormone Panel 1 (rat/mouse/human) Kit (5 Plate)	Custom, please inquire
	Steroid Hormone Panel 1 (rat/mouse/human) Kit (25 Plate)	Custom, please inquire
Human Luteinizing Hormone (LH)	Human Luteinizing Hormone Kit (1 Plate)	K151ETC-1
	Human Luteinizing Hormone Kit (5 Plate)	K151ETC-2
	Human Luteinizing Hormone Kit (25 Plate)	K151ETC-4
	Human Luteinizing Hormone Kit (250 Plate)	K151ETC-5

Natriuretic Peptide Biomarkers Assays

Analyte	Description	Catalog Number
Rat β2M	Rat β2M Kit (1 Plate)	Custom, please inquire
	Rat β2M Kit (5 Plate)	Custom, please inquire
	Rat β2M Kit (25 Plate)	Custom, please inquire
Rat BNP	Rat BNP Kit (1 Plate)	Custom, please inquire
	Rat BNP Kit (5 Plate)	Custom, please inquire
	Rat BNP Kit (25 Plate)	Custom, please inquire
Rat NT-proBNP	Rat NT-proBNP Kit (1 Plate)	Custom, please inquire
	Rat NT-proBNP Kit (5 Plate)	Custom, please inquire
	Rat NT-proBNP Kit (25 Plate)	Custom, please inquire

Contact Information

Phone: 1-301-947-2085 . Fax: 1-301-990-2776

Email: customerservice@mesoscale.com . Web: www.mesoscale.com



MESO SCALE DISCOVERY, MESO SCALE DIAGNOSTICS, WWW.MESOSCALE.COM, MSD, MSD (DESIGN), DISCOVERY WORKBENCH, QUICKPLEX, MULTI-ARRAY, MULTI-SPOT, SULFO-TAG, SECTOR, SECTOR HTS, SECTOR PR, SMALL SPOT (DESIGN), 96 WELL 1, 4, 7, & 10-SPOT (DESIGNS), 384 WELL 1 & 4-SPOT (DESIGNS) and SPOT THE DIFFERENCE are trademarks and/or service marks of Meso Scale Diagnostics, LLC. AKI Test is a trademark of Argutus Medical Limited.