

Diabetes and Obesity Related Assay Applications from MESO SCALE DISCOVERY®

Metabolic Markers

Adiponectin (human, mouse, rat)	Total GLP-1 (ver. 2)
C-Peptide (human, rat)	Total GLP-1 (human/mouse/rat)
Active Ghrelin (human) [‡]	Glucagon (human/mouse/rat)
Ghrelin (mouse/rat)	Insulin (human, mouse/rat)
Active GLP-1 (ver. 2)	Leptin (human, mouse, rat)
Active GLP-1 (7-36) amide	Resistin (human, mouse/rat)
Active GLP-1 (human/mouse/rat)	sRAGE (human, mouse, rat) [‡]
sFas (human) [‡]	Total PAI-1 (human, mouse) [‡]
FasL (human) [‡]	Total PYY (human, mouse/rat) [‡]
GLP-1 (x-36) amide	

Multiplex Kits

Adiponectin, Resistin (mouse)	Active GLP-1 (7-36) amide, Insulin, Glucagon, Leptin (human)
Leptin, Insulin (human, mouse, rat)	Insulin Signaling Panel (Total Protein) (IR, IGF-1R, IRS-1)
Glucagon, Insulin (mouse/rat)	Insulin Signaling Panel (Phosphoprotein) (pIR, pIGF-1R, pIRS-1)
Active GLP-1(7-36) amide, Insulin, Glucagon (mouse/rat)	
Active GLP-1, Insulin, Glucagon (mouse/rat)	
GLP-1(7-36) amide, Insulin, Glucagon (human, mouse/rat)	
Active GLP-1, Insulin, Glucagon, Leptin (human)	

Representative Cytokine Markers

IFN- γ (human, mouse, rat)	IL-10 (human, mouse, rat, canine) [‡]
IL-1 β (human, mouse, rat)	IL-12p70 (human, mouse)
IL-2 (human, mouse, rat, [‡] canine)	KC/GRO/CINC (mouse, rat)
IL-4 (human, mouse, rat)	IL-13 (human, mouse, rat)
IL-5 (human, mouse, rat)	TNF- α (human, mouse, rat, canine)
IL-6 (human, mouse, rat, canine)	MCP-1 (human, mouse, rat, canine) [‡]
IL-8 (human, canine)	M-CSF (human)

Multiplex Kit

TH1/TH2 10-plex (IFN- γ , IL-1 β , IL-2, IL-4, IL-5, IL-8, IL-10, IL-12p70, IL-13, TNF- α) (human)
TH1/TH2 9-plex (IFN- γ , IL-1 β , IL-2, IL-4, IL-5, KC/GRO/CINC, IL-10, IL-12 total, TNF- α) (mouse)
Pro-Inflammatory 9-Plex (GM-CSF, IFN- γ , IL-1 β , IL-2, IL-6, IL-8, IL-10, IL-12p70, TNF- α) (human)
Pro-Inflammatory 7-Plex (IFN- γ , IL-1 β , IL-6, IL-10, IL-12p70, KC/GRO/CINC, TNF- α) (mouse)

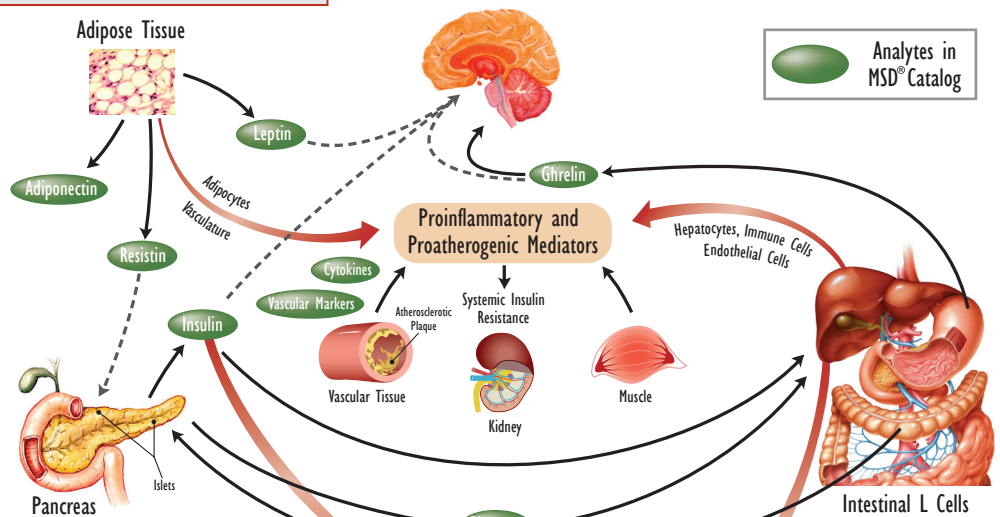
[‡] Available through our Prototype Printing Services

Representative Vascular Injury Markers

CRP (human)	P-Selectin (human)
E-Selectin (human)	SAA (human)
ICAM-1 (human)	Thrombomodulin (human)
I-CAM-3 (human)	VCAM-1 (human)

Multiplex Kits

Vascular Injury Panel I (Thrombomodulin, ICAM-3, E-Selectin, P-Selectin) (human)
Vascular Injury Panel II (SAA, CRP, VCAM-1, ICAM-1) (human)

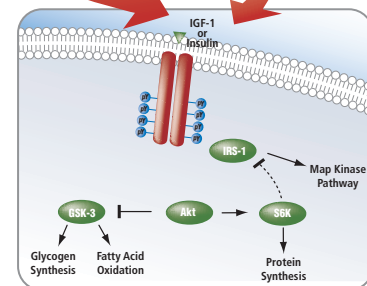


Representative Intracellular Signaling Markers

Akt (pS473) (human, mouse, rat)	IRS-1 (pS312) (human)
Akt (pT308) (human, mouse)	p70S6K (pT389) (human, mouse, rat)
Akt (Total) (human, mouse, rat)	p70S6K (pT421/pS424) (human, mouse, rat)
GSK-3 α (pS21) (human)	p70S6K (Total) (human, mouse, rat)
GSK-3 β (pS9) (human, mouse, rat)	S6RP (pS235/236) (human, mouse, rat)
GSK-3 β (Total) (human, mouse, rat)	S6RP (pS240/244) (human, mouse, rat)
	S6RP (Total) (human, mouse, rat)

Multiplex Kits

Akt (pS473), Total Akt (human, mouse, rat)
GSK-3 β (pS9), Total GSK-3 β (human, mouse, rat)
p70S6K (pT421/pS424), Total p70S6K (human, mouse, rat)
Akt Signaling Panel (Phosphoprotein) (pAkt, pp70S6K, pGSK-3 β) (human, mouse, rat)
Akt Signaling Panel (Total Protein) (Akt, p70S6K, GSK-3 β) (human, mouse, rat)



For Research Use Only. Not for use in diagnostic procedures.

Diabetes and Obesity Related Assay Applications from MESO SCALE DISCOVERY®

Ordering Information for Metabolic Assays

Metabolic Assays	Description	Catalog Numbers
Adiponectin	Human Adiponectin (1 Plate)	K151BXC-1
	Human Adiponectin (5 Plate)	K151BXC-2
	Mouse Adiponectin (1 Plate)	K152BXC-1
	Mouse Adiponectin (5 Plate)	K152BXC-2
	Rat Adiponectin (1 Plate)	K153BXC-1
	Rat Adiponectin (5 Plate)	K153BXC-2
Ghrelin	Mouse/Rat Total Ghrelin (1 Plate)	K15010C-1
	Mouse/Rat Total Ghrelin (5 Plate)	K15010C-2
GLP-1 (x-36) amide	GLP-1 (7-36) amide (1 Plate)	K150FAC-1
	GLP-1 (7-36) amide (5 Plate)	K150FAC-2
Active GLP-1 (ver. 2)	Active GLP-1 (ver. 2) (1 Plate)	K150JWC-1
	Active GLP-1 (ver. 2) (5 Plate)	K150JWC-2
Active GLP-1 (7-36) amide	Active GLP-1 (7-36) amide (1 Plate)	K150HYC-1
	Active GLP-1 (7-36) amide (5 Plate)	K150HYC-2
Total GLP-1 (ver. 2)	Total GLP-1 (ver. 2) (1 Plate)	K150JVC-1
	Total GLP-1 (ver. 2) (5 Plate)	K150JVC-2
Glucagon	Human Glucagon (1 Plate)	K151HCC-1
	Human Glucagon (5 Plate)	K151HCC-2
	Mouse/Rat Glucagon (1 Plate)	K150HCC-1
	Mouse/Rat Glucagon (5 Plate)	K150HCC-2
Insulin	Human Insulin (1 Plate)	K151BZC-1
	Human Insulin (5 Plate)	K151BZC-2
	Mouse/Rat Insulin (1 Plate)	K152BZC-1
	Mouse/Rat Insulin (5 Plate)	K152BZC-2
Leptin	Human Leptin (1 Plate)	K151BYC-1
	Human Leptin (5 Plate)	K151BYC-2
	Mouse Leptin (1 Plate)	K152BYC-1
	Mouse Leptin (5 Plate)	K152BYC-2
Resistin	Rat Leptin (1 Plate)	K153BYC-1
	Rat Leptin (5 Plate)	K153BYC-2
	Mouse/Rat Resistin (1 Plate)	K152FNC-1
	Mouse/Rat Resistin (5 Plate)	K152FNC-2

Metabolic Multiplex Assays	Description	Catalog Numbers
GLP-1(7-36) amide, Insulin, Glucagon	Human GLP-1 (7-36)amide, Insulin, Glucagon (1 Plate)	K15160C-1
	Human GLP-1 (7-36)amide, Insulin, Glucagon (5 Plate)	K15160C-2
	Mouse/Rat GLP-1 (7-36)amide, Insulin, Glucagon (1 Plate)	K15159C-1
	Mouse/Rat GLP-1 (7-36)amide, Insulin, Glucagon (5 Plate)	K15159C-2
Leptin, Insulin	Human Leptin, Insulin (1 Plate)	K15164C-1
	Human Leptin, Insulin (5 Plate)	K15164C-2
	Mouse Metabolic (1 Plate)	K15124C-1
	Mouse Metabolic (5 Plate)	K15124C-2
	Rat Leptin, Insulin (1 Plate)	K15158C-1
	Rat Leptin, Insulin (5 Plate)	K15158C-2
Glucagon, Insulin	Mouse/Rat Insulin, Glucagon (1 Plate)	K15145C-1
	Mouse/Rat Insulin, Glucagon (5 Plate)	K15145C-2
Active GLP-1(7-36) amide, Insulin, Glucagon	Mouse/Rat Active GLP-1 (7-36) amide, Insulin, Glucagon (1 Plate)	K15172C-1
	Mouse/Rat Active GLP-1 (7-36) amide, Insulin, Glucagon (5 Plate)	K15172C-2
Active GLP-1, Insulin, Glucagon	Mouse/Rat Active GLP-1, Insulin, Glucagon (1 Plate)	K15171C-1
	Mouse/Rat Active GLP-1, Insulin, Glucagon (5 Plate)	K15171C-2
Active GLP-1(7-36) amide, Insulin, Glucagon, Leptin	Human Active GLP-1 (7-36) amide, Insulin, Glucagon, Leptin (1 Plate)	K15173C-1
	Human Active GLP-1 (7-36) amide, Insulin, Glucagon, Leptin (5 Plate)	K15173C-2
Active GLP-1, Insulin, Glucagon, Leptin	Human Active GLP-1, Insulin, Glucagon, Leptin (1 Plate)	K15174C-1
	Human Active GLP-1, Insulin, Glucagon, Leptin (5 Plate)	K15174C-2

For Research Use Only. Not for use in diagnostic procedures.

Contact Information

Customer Service

Phone: 1-301-947-2085 . Fax: 1-301-990-2776 . Email: customerservice@mesoscale.com . Web: www.mesoscale.com



© 2010 Meso Scale Diagnostics, LLC. All rights reserved.

MESO SCALE DISCOVERY, MESO SCALE DIAGNOSTICS, WWW.MESOSCALE.COM, MSD, MSD (DESIGN), DISCOVERY WORKBENCH, QUICKPLEX, MULTI-ARRAY, MULTI-SPOT, SULFO-TAG, SECTOR, SECTOR HTS and SECTOR PR are trademarks and/or service marks of Meso Scale Diagnostics, LLC.