

SECTOR™ Instruments

M e s o S c a l e D i s c o v e r y ®



The New Standard in Detection

SECTOR Imager 6000



SECTOR™ instruments from MSD!

The SECTOR Imager 6000 and the SECTOR Imager 2400 are the flagship instruments of the award-winning SECTOR Imager product line. Both instruments use ultra-low noise CCD cameras for ultimate sensitivity, wide dynamic range and rapid read times. The SECTOR Imager 6000 and the SECTOR Imager 2400 are ideal for applications requiring high throughput and high sensitivity. Whether you are multiplexing biomarkers and cytokines, running assays for immunogenicity or conducting high throughput screening you will appreciate the simple assay formats and robust performance.

SECTOR Imager Features:

- Single and multiplex assay formats
- Large menu of off-the-shelf kits
- Multiple bar code readers
- No complicated fluidics
- Highly sensitive imaging detection systems
- Six logs dynamic range
- Rapid read times (up to a plate per minute)
- Workstation or automated operation

SECTOR Imager 2400



The SECTOR PR readers offer users an option where small footprint and economical price matter. These affordable instruments have a combination of simplicity and performance that makes them perfect for regulated environments and lower throughput applications. Since assays port seamlessly between all SECTOR instruments and the instruments all use the same software, assays developed on the SECTOR PR readers can be transferred to SECTOR Imagers for higher throughput or multiplexing without missing a beat.

SECTOR PR readers feature:

- Photodiode array for fast and efficient detection
- Integrated bar code readers
- Multiplex and single array readouts
- Five logs dynamic range
- Simple operation
- No-wash assay formats

SECTOR PR 400 Reader



SECTOR PR 100 Reader



		Imager 6000	Imager 2400	PR 400	PR 100
MULTI-ARRAY	96-well	●	●	●	●
	96-well small spot	●	●	●	●
	384-well	●	●		
	1536-well	●			
MULTI-SPOT	96-well 4 spot	●	●	●	
	96-well 7 spot	●	●		
	96-well 10 spot	●	●		
	384-well 4 spot	●			
	24-well 25 spot	●			
	24-well 64 spot	●			
	24-well 100 spot	●			

Choose the right instrument for you!

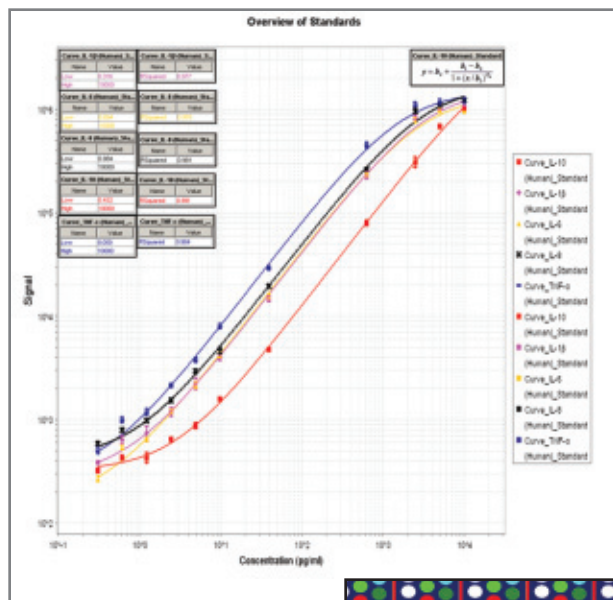
MSD now has an instrument to fit every application and budget. Do you want the complete package? The SECTOR Imager 6000 has a high-speed, large format CCD camera that reads the complete line of MSD plates from 24- to 1536-well formats. Power and sensitivity? Try the SECTOR Imager 2400. With its own line of microplates, it offers 384-well readout and our most popular multiplexing formats. Looking to increase the content of your assays? With their small footprint and modest price, the SECTOR PR readers make the power of MSD accessible to any lab.

Model	Detection Technology	Read Cycle	Plate Read Time	Multiplex Capability	Automation Integration	Barcode Reader
SECTOR Imager 6000	CCD Camera	6 Sectors	70 seconds	Yes	Yes	Dual, internal
SECTOR Imager 2400	CCD Camera	24 Sectors	3.5 minutes	Yes	Yes	Dual, internal
SECTOR PR 400 reader	Photodiode array	12 Sectors	2 - 5 minutes	Yes	Optional	Dual, internal
SECTOR PR 100 reader	Photodiode array	12 Sectors	2 minutes	No	Optional	Single, external

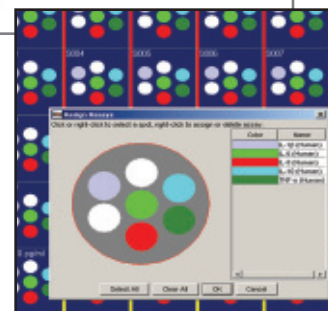
NEW! DISCOVERY WORKBENCH® Software 3.0.17 with DATA ANALYSIS TOOLBOX

The newest version of MSD DISCOVERY WORKBENCH software continues our tradition of reliable, feature-packed software. All SECTOR instruments share the same intuitive user interface and simple file management utilities. With no filter settings, assays protocols, or parameters to set, and 21 CFR Part II compliance built in, you can focus on your assays, not your software.

The new MSD Discovery Workbench Data Analysis Toolbox (DAT) allows you to track and analyze experiments as simply as you acquire them. With DAT you can quickly generate reports, graphs, tables, and notes that can be published, shared through PDFs, presented in Powerpoint and Word documents, and further analyze data in EXCEL. Users can generate, track, and share plate layouts and experiment templates across all MSD MULTI-ARRAY® and MULTI-SPOT® plates. Tracking and change control allows experiments to be published and maintained for traceability. The Data Analysis Toolbox is available as an integrated part of your instrument's Discovery Workbench Software or as a standalone package for use on other computers.



The screenshot shows a data table with the following columns: Name, ID, Concentration, Signal, and Date. The data rows contain numerical values for each column, representing experimental results.





Meso Scale Discovery®

A division of Meso Scale Diagnostics, LLC.

9238 Gaither Road Gaithersburg, MD 20877 Phone:240.631.2522 . Fax:301.990.2776 . Website:www.mesoscale.com
Meso Scale Discovery, Meso Scale Diagnostics, MSD (and design), DISCOVERY WORKBENCH, MULTI-ARRAY, MULTI-SPOT, SECTOR PR, and SECTOR are all trademarks of Meso Scale Diagnostics, LLC.
19503-v1.7-2007Jan