

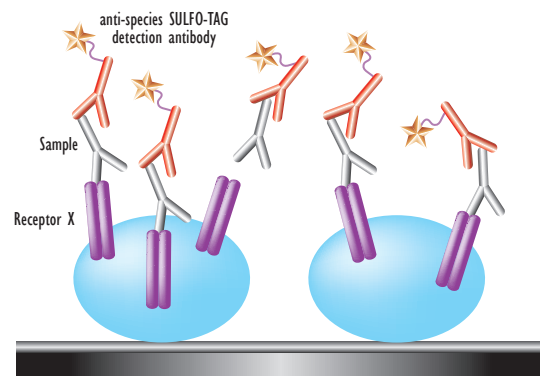
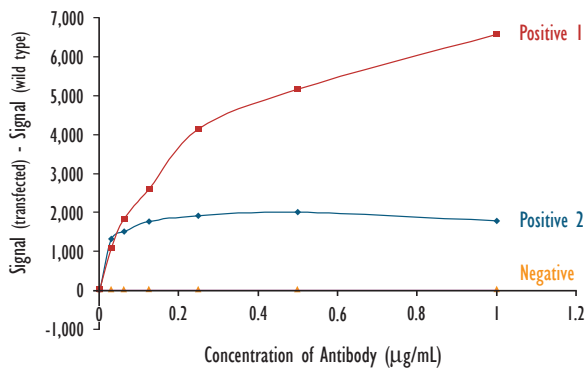
# Cell-Based Assay Applications from Meso Scale Discovery

Meso Scale Discovery's MULTI-ARRAY® technology enables and improves the development of previously challenging cell-based assay applications. MSD's cell-friendly carbon electrode plate surface uniquely allows the immobilization of whole cells or membranes, eliminating difficulties with producing functional recombinant cell surface proteins. Let MSD's cell-based assay applications enable you to perform:

- Hybridoma screening for antibodies against cell surface proteins.
- Screening for autoimmune antibodies against cell surface proteins.
- Neutralization assays for immune response screening to protein and antibody drugs.
- Compound inhibition for receptor-ligand or receptor-antibody interactions.

## MSD Cell Based Assay Application: Hybridoma Screening

Screening for Antibodies Against Cell Surface Receptors (12,500 cells/well)



Sample Assay

## Protocol

1. Immobilize cells on plate in PBS at 37°C for 1 hour.
2. Wash 3 times with PBS.
3. Add 25 µL/well sample for 1 hour at room temperature.
4. Wash 3 times with PBS.
5. Add 25 µL/well SULFO-TAG detection antibody (1 µg/mL in PBS-0.5% FBS) for 1 hour at room temperature.
6. Wash 3 times with PBS.
7. Add 150 µL/well 1X Read Buffer T, surfactant free, and analyze plate on SECTOR™ instrument.

## Advantages of MSD over FACS Scanning

Method Comparison		
	MSD	FACS Scanning
Cells per Assay Determination	12,500	100,000
Sample Volume	25 µL	50 µL
Detection Antibody Volume	25 µL	50 µL
Centrifugation After Wash Step	No	Yes
Automation Applicable	Yes	No
Read Time per 96-Well Plate	70 sec	1 hr
Throughput per Day (plates)	> 10-50 Plates	< 3 Plates

- Develop a method for screening cell surface receptors in as little as 2 days.
- Generate 600 data points in 4 hours.
- User friendly instrument (2 clicks and read).
- Simple data analysis.

## MSD Products

	96-well MULTI-ARRAY Plates			
	PR100	PR400	SI2400	SI6000
Uncoated Standard	L13XA-1	L17XA-1	L15XA-1	L11XA-1
Uncoated High-Bind	L13XB-1	L17XB-1	L15XB-1	L11XB-1

Labeled Reporters and Labeling Reagents		
SULFO-TAG NHS-Ester	150 nMoles	R91AN-1
SULFO-TAG Anti-Rabbit Antibody (Goat)	50 µg	R32AB-5
SULFO-TAG Anti-Mouse Antibody (Goat)	50 µg	R32AC-5
SULFO-TAG Anti-Human Antibody (Goat)	50 µg	R32AJ-5

## Contact Information

Customer Service  
Phone: 1-240-631-2522 x4685 . Fax: 1-301-990-2776 . Email: sales@mesoscale.com . Web: www.mesoscale.com

FOR RESEARCH USE ONLY

